



HP WallArt Solution 3.0

CALDERA
WIDE FORMAT IMAGING

JDF Workflow Integration

February 2015

HP WallArt Team



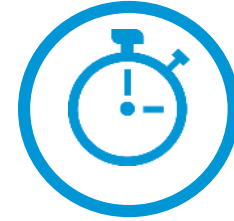
Enabling JDF in HP WallArt Basic Concept

JDF/RIP's Automation

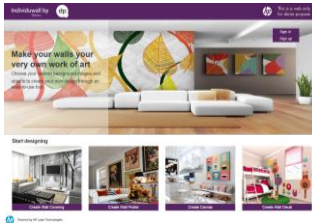
More efficiency on your workflow

How can it accelerate the process?

- 1 Sends ready-to-print files directly from your web2print
- 2 RIP automatically downloads your files, without manual interaction



AUTOMATIC PROCESS



HP WallArt Web2Print



File Ripping



Printing

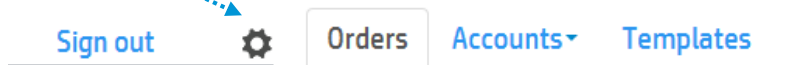




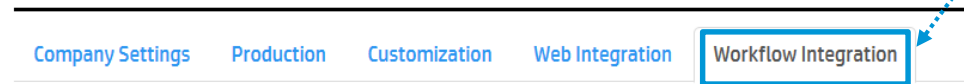
Enabling JDF in HP WallArt

Enter Workflow Integration settings

Click on [settings](#)



Enter [Workflow Integration settings](#)



JDF Connection

<https://jdf.hpwallart.com/xxx>

Enable JDF connectivity ⓘ

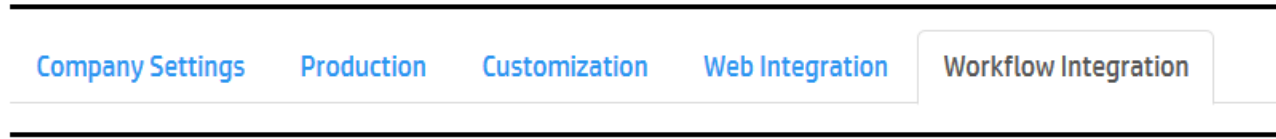
JDF Connection

Connect to another Print Service Provider

Enable redirection ⓘ



Configure JDF Connection settings



JDF Connection

<https://jdf.hpwallart.com/xxx>

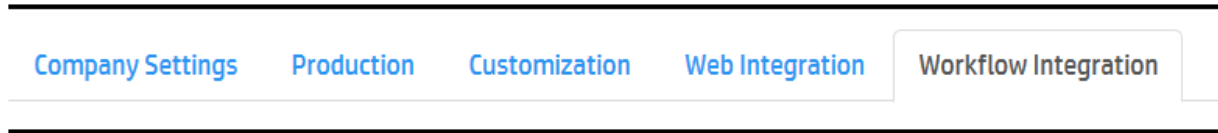
When you are setting HP WallArt in your RIP, you **must enter this URL**

Note: URL customized for each HP WallArt's user (e.g. xxx)

Enable JDF connectivity ⓘ



Configure JDF Connection settings



JDF Connection

<https://jdf.hpwallart.com/xxx>

Enable JDF connectivity ⓘ

Enable JDF authentication ⓘ

Use single page PDF in JDF job ticket ⓘ

To have JDF Automation feature activated, you need to click on this tab

You need to click on "Enable JDF connectivity" to be able to download [JDF ticket](#) and have the [RIP status](#), both in the dashboard

Then, all the other options will be visible



Configure JDF Connection settings

Company Settings

Production

Customization

Web Integration

Workflow Integration

JDF Connection

<https://jdf.hpwallart.com/xxx>

Enable JDF connectivity ⓘ

Enable JDF authentication ⓘ

←..... It will appear **enabled by default**. If you have your **own tailored solution in your RIP**, you can disable it by not having it clicked

Use single page PDF in JDF job ticket ⓘ



Configure JDF Connection settings

Company Settings

Production

Customization

Web Integration

Workflow Integration

JDF Connection

<https://jdf.hpwallart.com/xxx>

Enable JDF connectivity ⓘ

Enable JDF authentication ⓘ

Use single page PDF in JDF job ticket ⓘ [Click here if your want to have the JDF job ticket with a PDF file with no trim lines or tiling](#)





HP WallArt Set up in

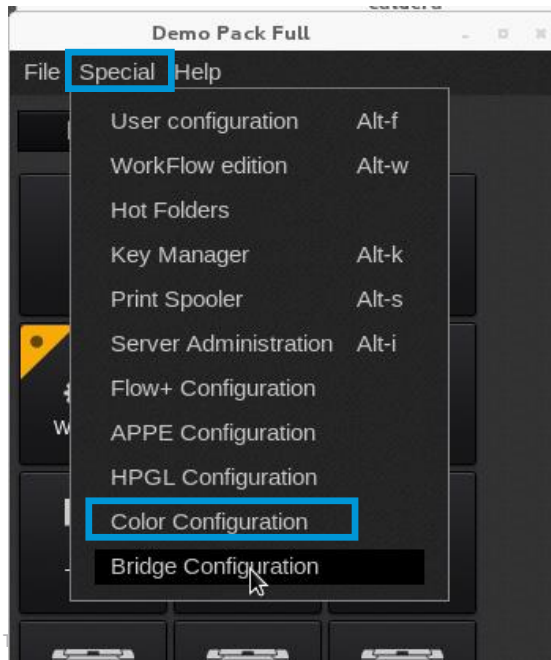
Only for Caldera Version 10



Set up HP WallArt in Caldera RIP

Only for Caldera Version 10

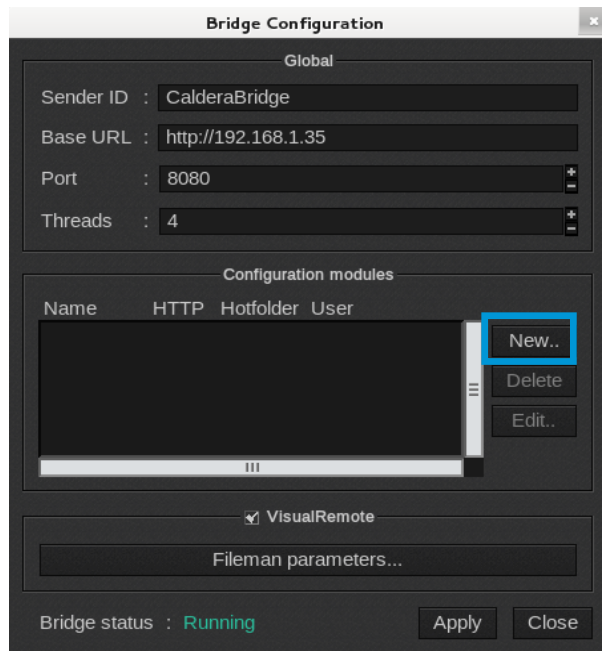
- 1 **Note:** You need to have a Bridge-enabled key license. Configure CALDERA Bridge in order to use HP WallArt in CALDERA RIP in [Special > Bridge Configuration](#) Menu



Set up HP WallArt in Caldera RIP

Only for Caldera Version 10

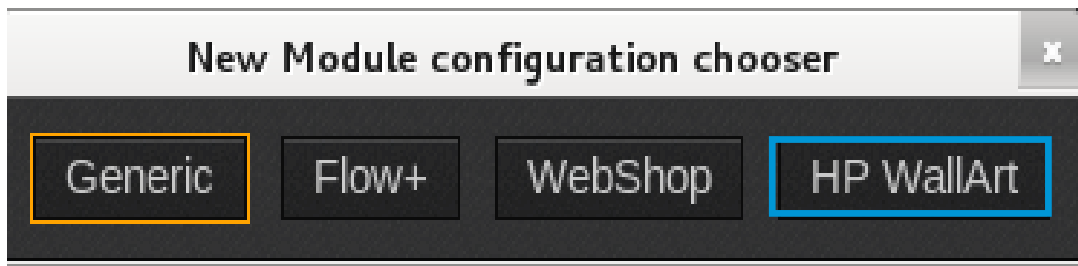
- 2 Create a new configuration module



Set up HP WallArt in Caldera RIP

Only for Caldera Version 10

- 3 Select HP WallArt type



Set up HP WallArt in Caldera RIP

Only for Caldera Version 10

4 Fill in the required fields

Bridge Module Configuration

Name : HP WallArt Queue

Image bar tab : Current

Send to : None

JDF Link URL : <https://jdf.hpwallart.com/xxx>

User : caldera

Hold incoming jobs

Fileman parameters...

Job types

WallCovering WallPoster

Canvas WallDecal

Use authentication

User login : UserName

Password : Password

HP WallArt OK Cancel

Company Settings Production Customization Web Integration Workflow Integration

JDF Connection

<https://jdf.hpwallart.com/digitalprinting>

Enable JDF authentication

Use single page PDF in JDF job ticket

Enable JDF ticket download

Connect to another Print Service Provider

Enable redirection

Support | English | Sign In/Register

Email

email address

Password

password

Forgot password? Resend confirmation link

Login

New User? Create your account

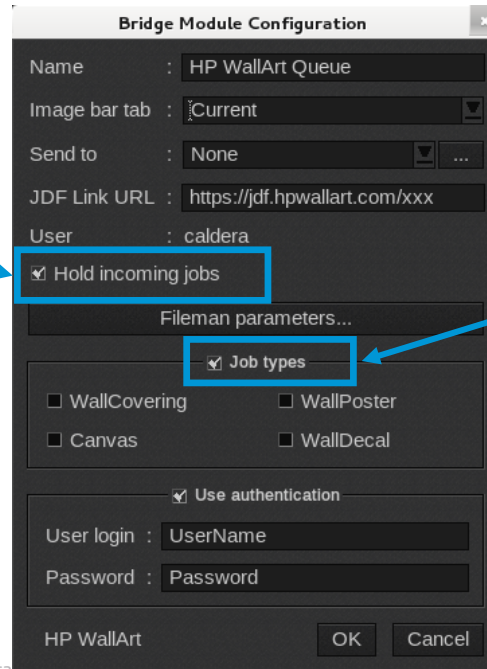
Set up HP WallArt in Caldera RIP



Only for Caldera Version 10

4 Bridge Module Configuration set ups

Disable “Hold incoming jobs” if you want to open the images in Caldera automatically. With this option set on you will have to use the “Open in RIP” button in JobTracker



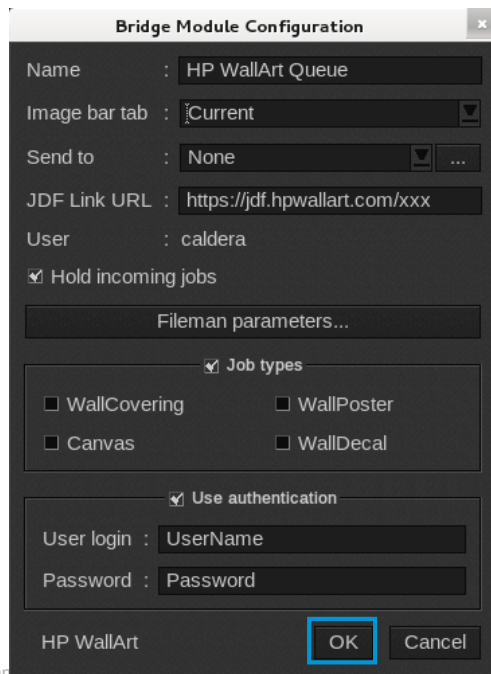
When “Job types” is disabled, no filtering is applied, which will load jobs of all types



Set up HP WallArt in Caldera RIP

Only for Caldera Version 10

5 Confirm with OK button



Bridge Module Configuration

Name : HP WallArt Queue

Image bar tab : Current

Send to : None

JDF Link URL : https://jdf.hpwallart.com/xxx

User : caldera

Hold incoming jobs

Fileman parameters...

Job types

WallCovering WallPoster

Canvas WallDecal

Use authentication

User login : UserName

Password : Password

HP WallArt

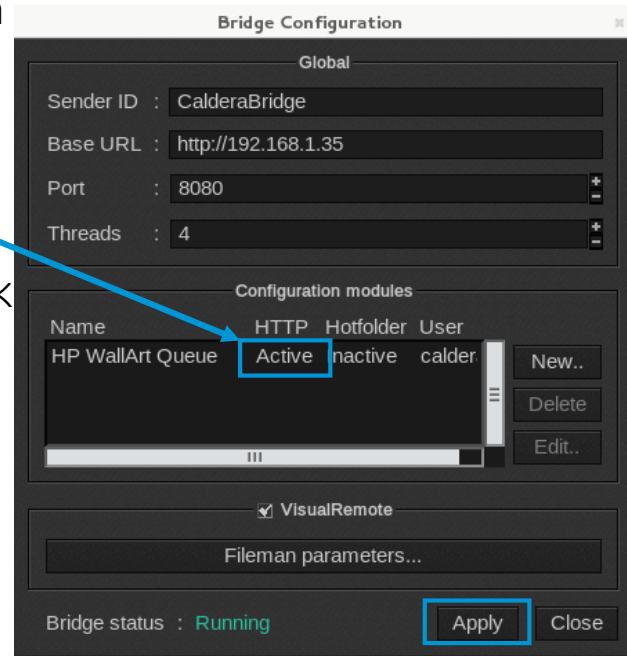
OK Cancel

Set up HP WallArt in Caldera RIP

Only for Caldera Version 10

- 6 Activate the module with **Apply** button

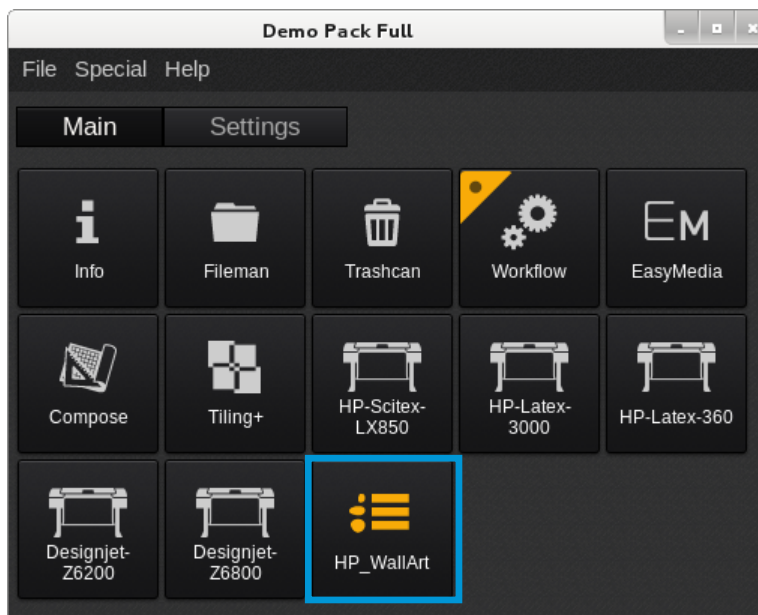
It should read "Active" for the HP WallArt module. Other messages are "Authentication denied" or "JDF Link problem". If any of those appear, check the configuration (repeat the steps above)



Set up HP WallArt in Caldera RIP

Only for Caldera Version 10

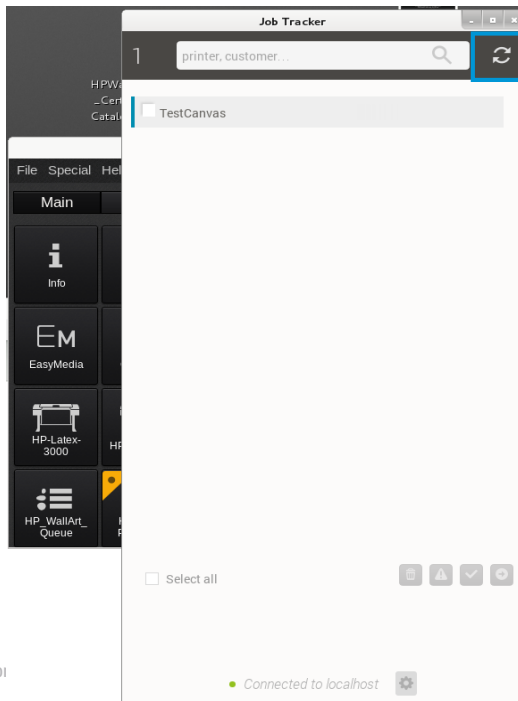
- 7 Restart Caldera V10 interface. There should be an icon with the same name as the new configuration module. That opens the Job Tracker



Set up HP WallArt in Caldera RIP

Only for Caldera Version 10

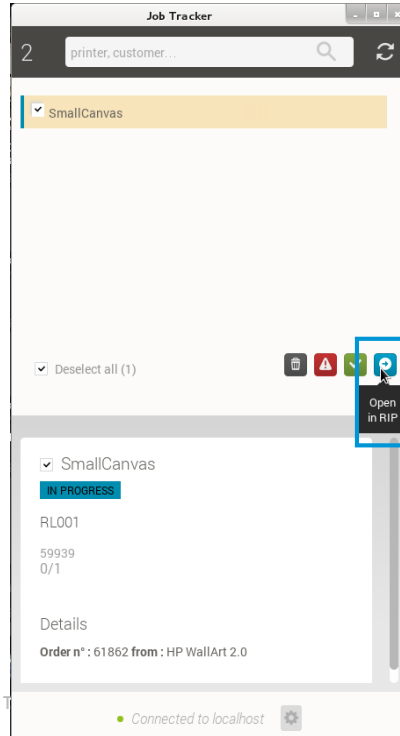
- 8 In Job Tracker, hit the refresh icon on top-right corner. That will retrieve any waiting HP WallArt job.



Set up HP WallArt in Caldera RIP

Only for Caldera Version 10

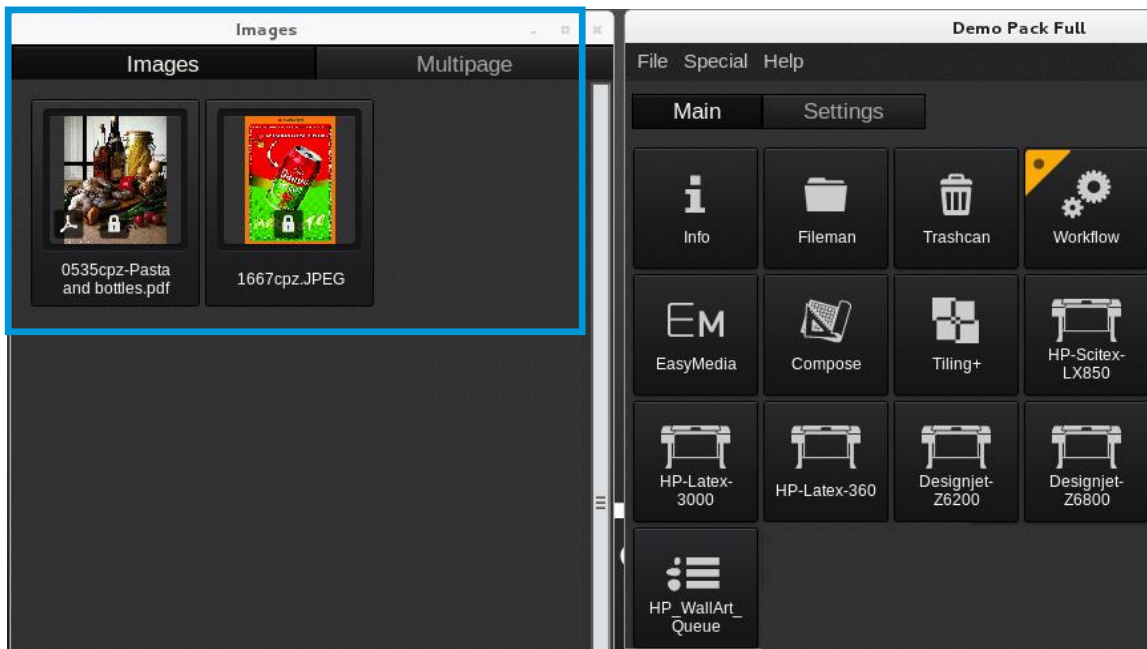
9 Select the job/jobs you want to download and click the blue button.



Set up HP WallArt in Caldera RIP

Only for Caldera Version 10

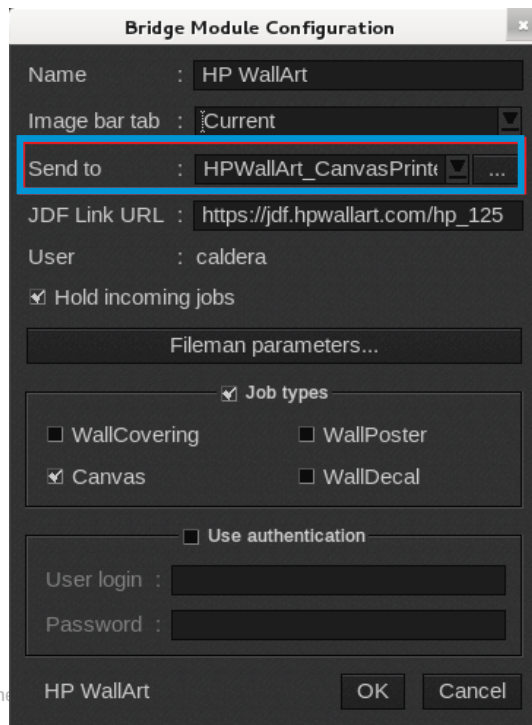
10 The jobs will be downloaded to the RIP in the images area to be processed



Set up HP WallArt in Caldera RIP

Only for Caldera Version 10

- 11** The HP WallArt jobs could be sent directly to a created Workflow by selecting the “Send to” option



The screenshot shows the 'Bridge Module Configuration' dialog box for 'HP WallArt'. The 'Send to' field is highlighted with a red box and contains the value 'HPWallArt_CanvasPrint'. Other fields include 'Name: HP WallArt', 'Image bar tab: Current', 'JDF Link URL: https://jdf.hpwallart.com/hp_125', and 'User: caldera'. There are checkboxes for 'Hold incoming jobs', 'Job types' (with 'Canvas' selected), and 'Use authentication'. The dialog has 'OK' and 'Cancel' buttons at the bottom.

Name	: HP WallArt
Image bar tab	: Current
Send to	: HPWallArt_CanvasPrint
JDF Link URL	: https://jdf.hpwallart.com/hp_125
User	: caldera
<input checked="" type="checkbox"/> Hold incoming jobs	
Fileman parameters...	
<input checked="" type="checkbox"/> Job types	
<input type="checkbox"/> WallCovering	<input type="checkbox"/> WallPoster
<input checked="" type="checkbox"/> Canvas	<input type="checkbox"/> WallDecal
<input type="checkbox"/> Use authentication	
User login	: []
Password	: []
HP WallArt	
OK Cancel	

Thank you

