



Date: January 2018

Region: WW

Support Area: Support/Media

How to use the printer spectrophotometer from the ONYX RIP

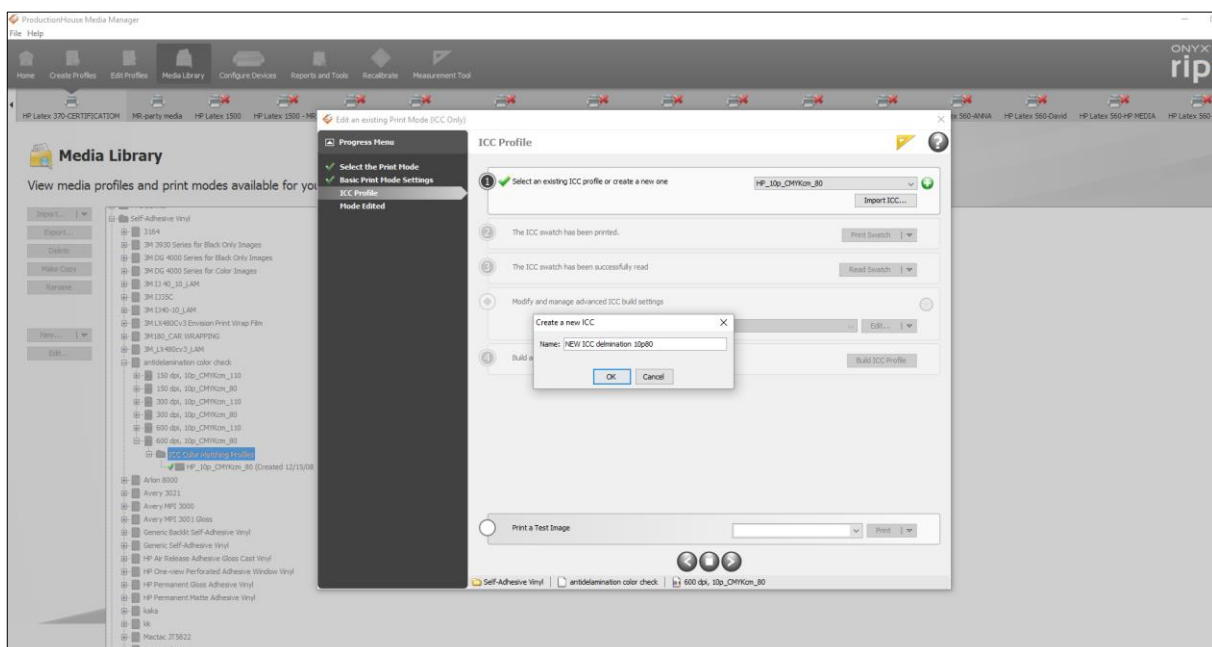
This document explains the steps needed to perform an ICC profile from the ONYX RIP in the following printer models (that have an internal spectrophotometer): **360, 365, 370, 375, 560 and 570**. Before starting it is recommended to:

- Start from a preset, i.e. clone a “Generic material”
 - Perform one ICC for each type of media and print mode to be used
 - Give a new name to each ICC profile
- Clean PHs + Auto PH alignment + Color Calibration

Procedure to complete the correct ICC profile

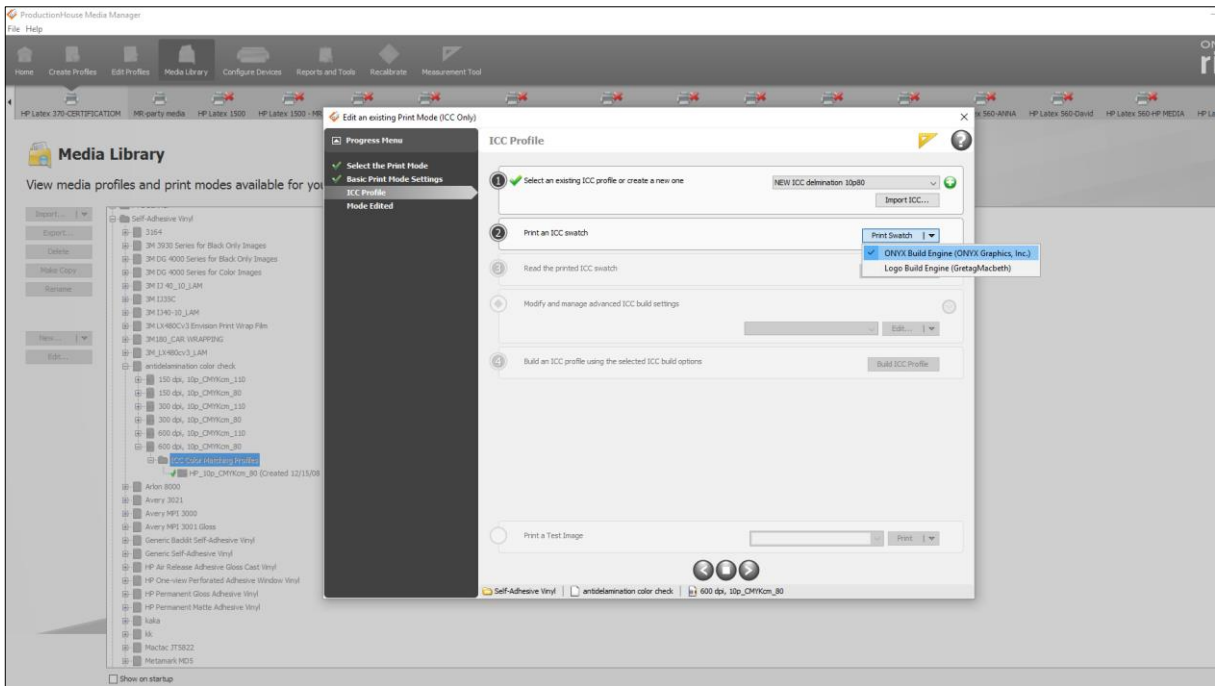
1. Open the Media Manager.

- Select the printer model
- Open the Media Library
- Select the media and print mode (previously created in the printer)
- Select a preexisting ICC and edit it (ICC only)
- Create new ICC and **RENAME** it



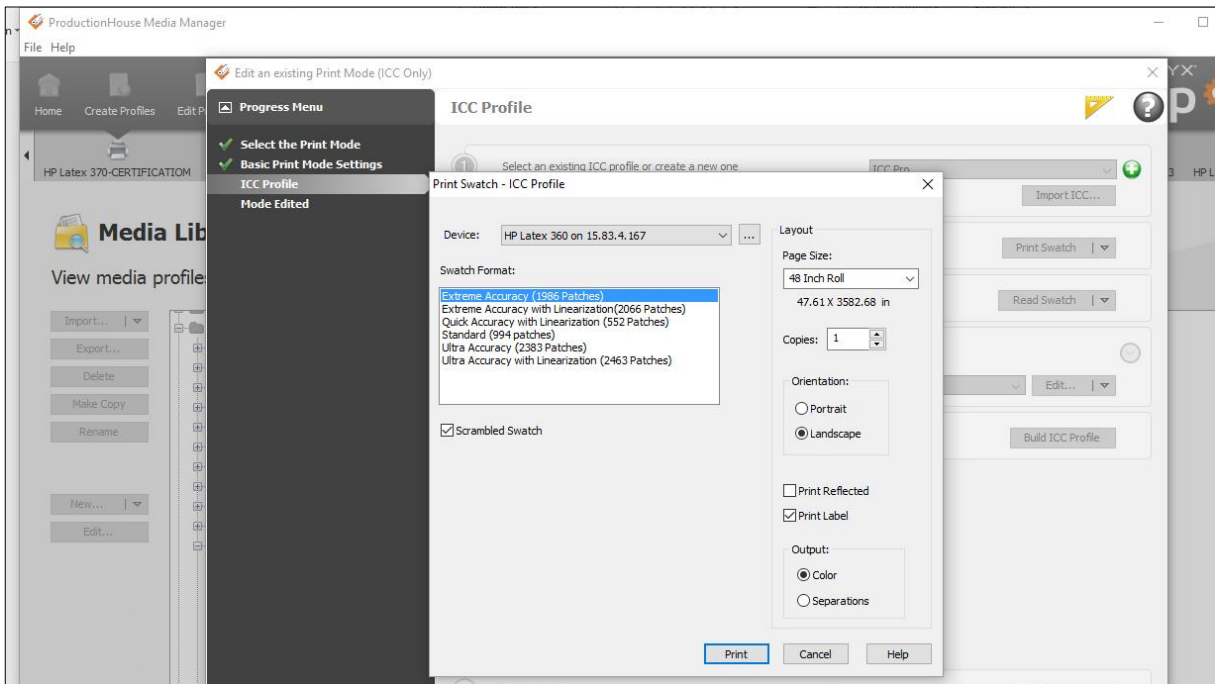
2. Print an ICC swatch.

-Select the **ONYX Build Engine** option



3. Select "Device" and "Swatch Format."

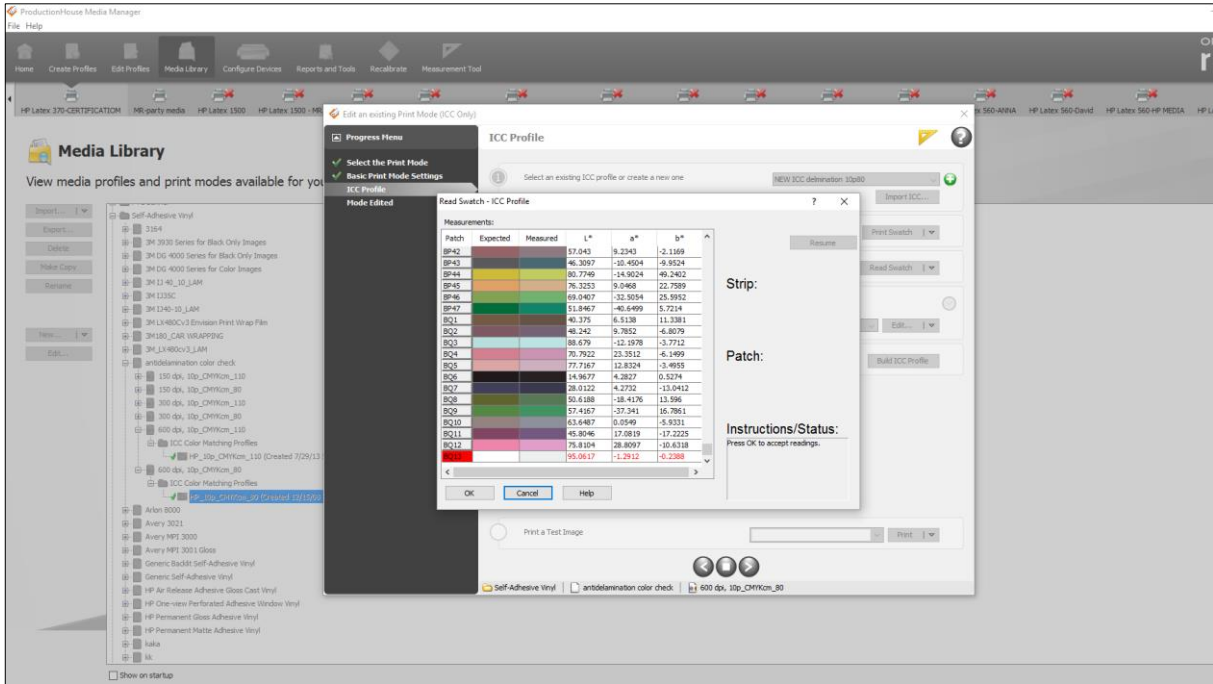
- It is suggested a standard patch format of 1500 or higher and also one measurement per patch
- Be sure to select the correct print page size
- Select **Print**



4. Automatic reading.

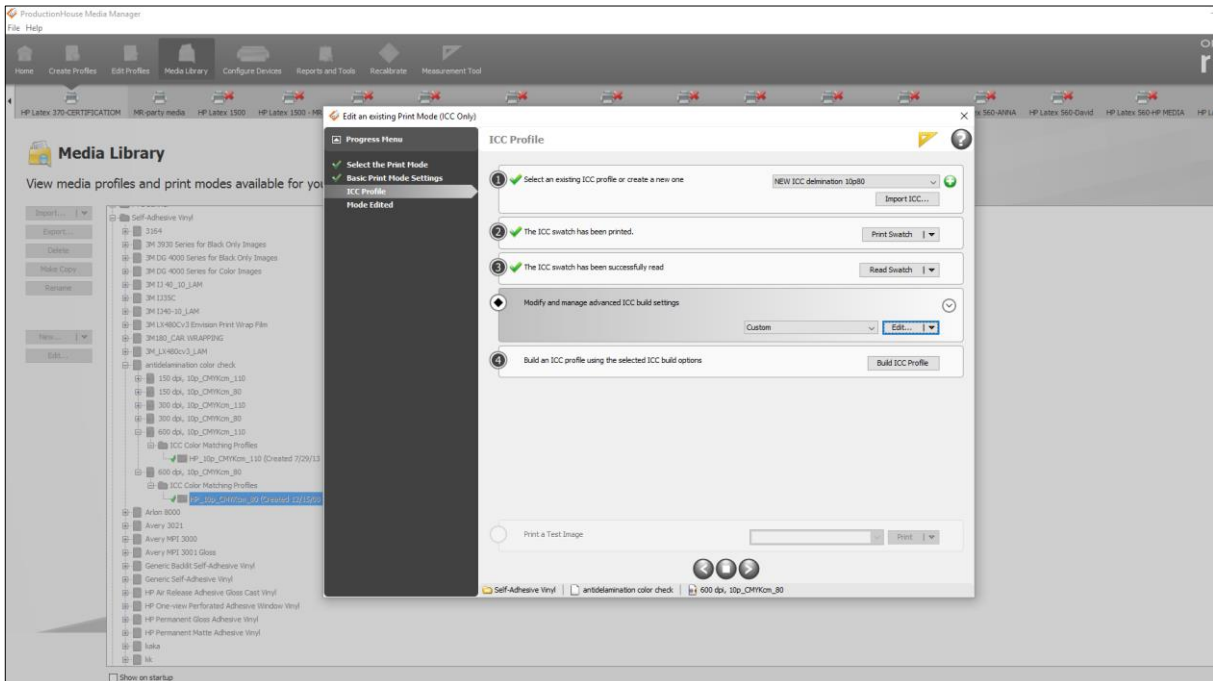
After printing, the printer will read the swatch automatically. Note that with the “blank” color it may give you an error, but this is due to the comparison with the color of the media itself. In case you obtain an error with another color, it is suggested to carry out the creating of the ICC profile again, because the error could be stemming from media defects.

-Select **OK** to continue



5. Modify ICC build settings.

-Select **Edit...** in order to modify the settings



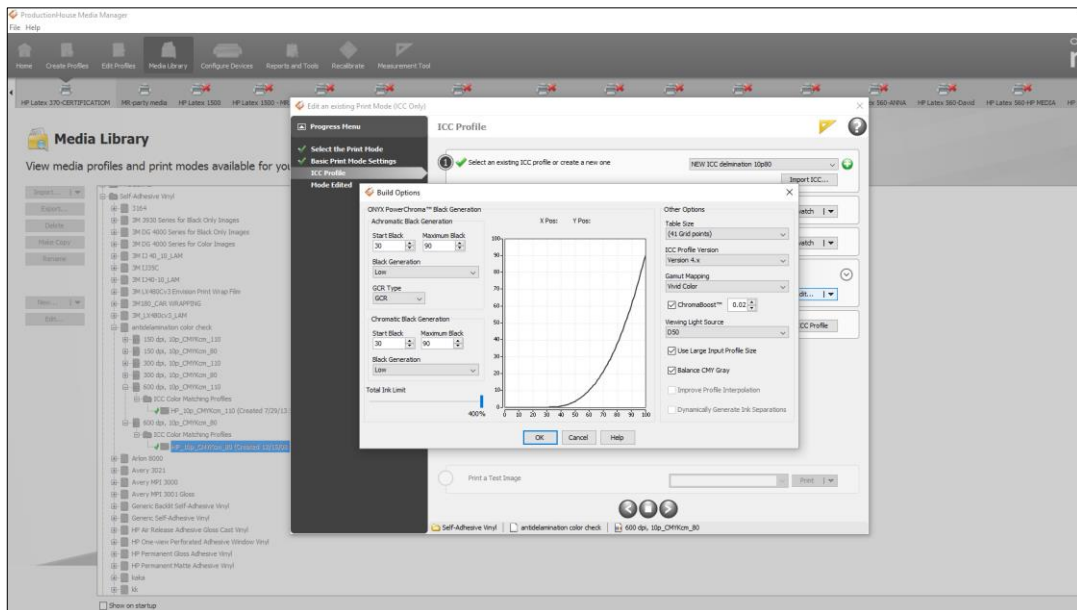
6. Build settings.

Depending on the settings that each customer will want, it is possible to make some variations on:

- Black generation
- Chromatic black generation
- Minimum and maximum of black color

NOTE: The advantage of creating the ICC Profile from the RIP is that you will be able to change these parameters. If not, it would be the same as in creating it from the printer.

-Create the ICC Profile and select **OK**



7. Build ICC and select it in the Media Library.

The profile has been created and selected (automatically). However, it is possible to see the generic one in case its use is required.

