



Date: January 2018

Region: WW

Support Area: Support/Media

How to use the printer spectrophotometer from the CALDERA RIP

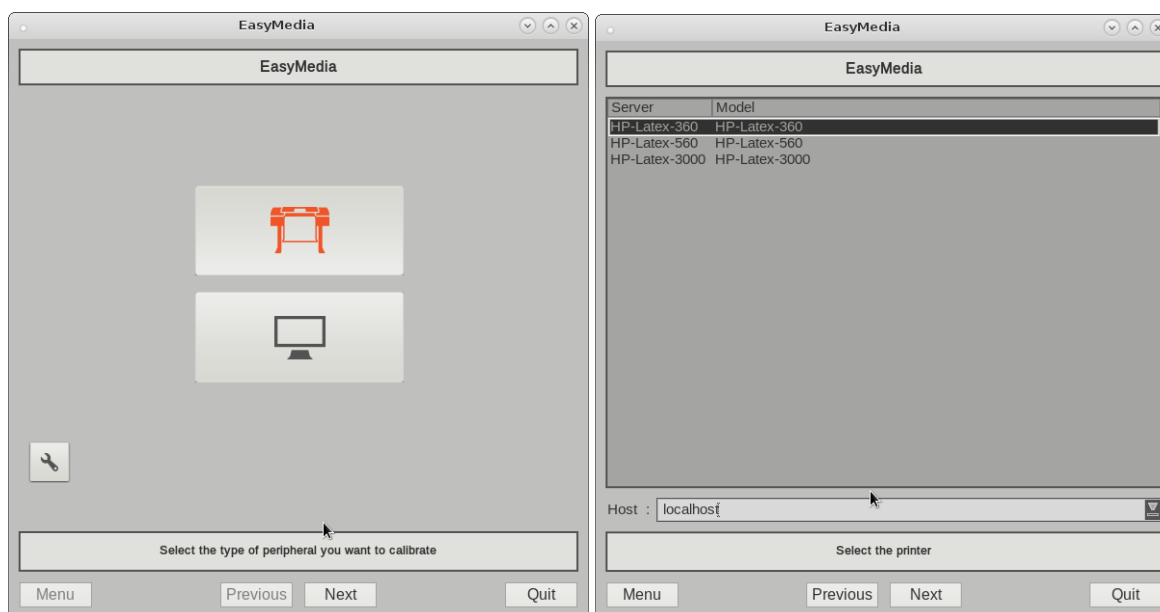
This document explains the steps needed to perform an ICC profile from the CALDERA RIP in the following printer models (that have an internal spectrophotometer): **360, 365, 370, 375, 560 and 570**. Before starting it is recommended to:

- Start from a preset, i.e. clone a “Generic material”
 - Perform one ICC for each type of media and print mode to be used
 - Give a new name to each ICC profile
- Clean PHs + Auto PH alignment + Color Calibration

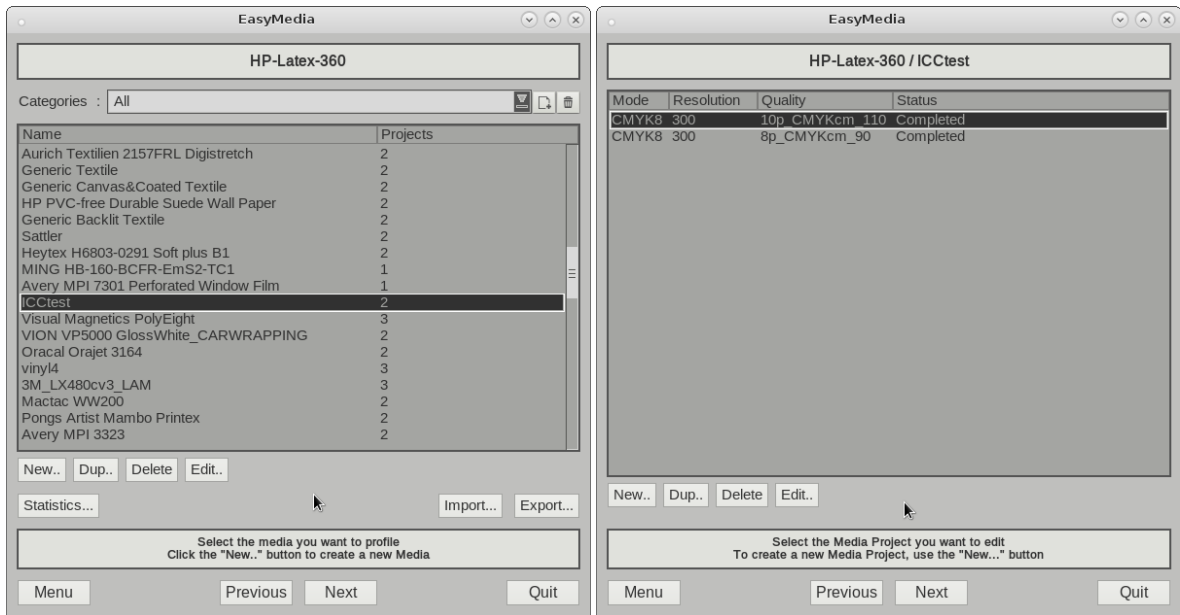
Procedure to complete the correct ICC profile

1. Open EasyMedia to start the calibration.

- Select the **calibrate printer** option
- Select the printer model

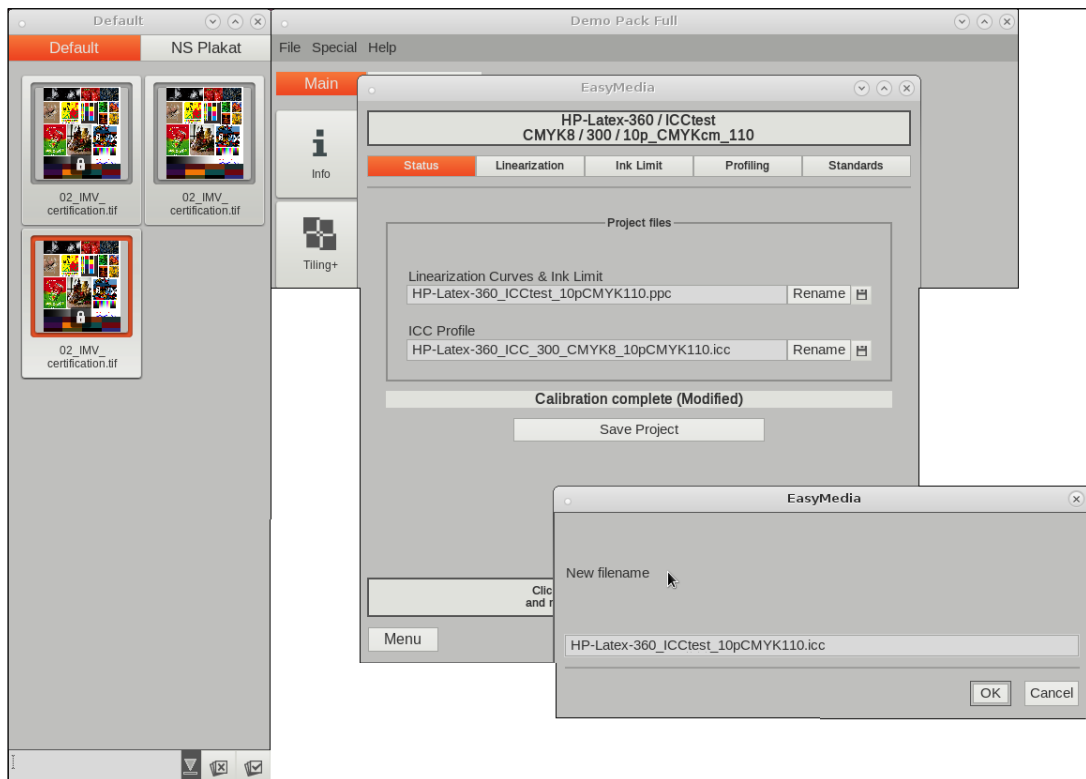


- Select the media loaded
- Select the print mode quality you want to edit



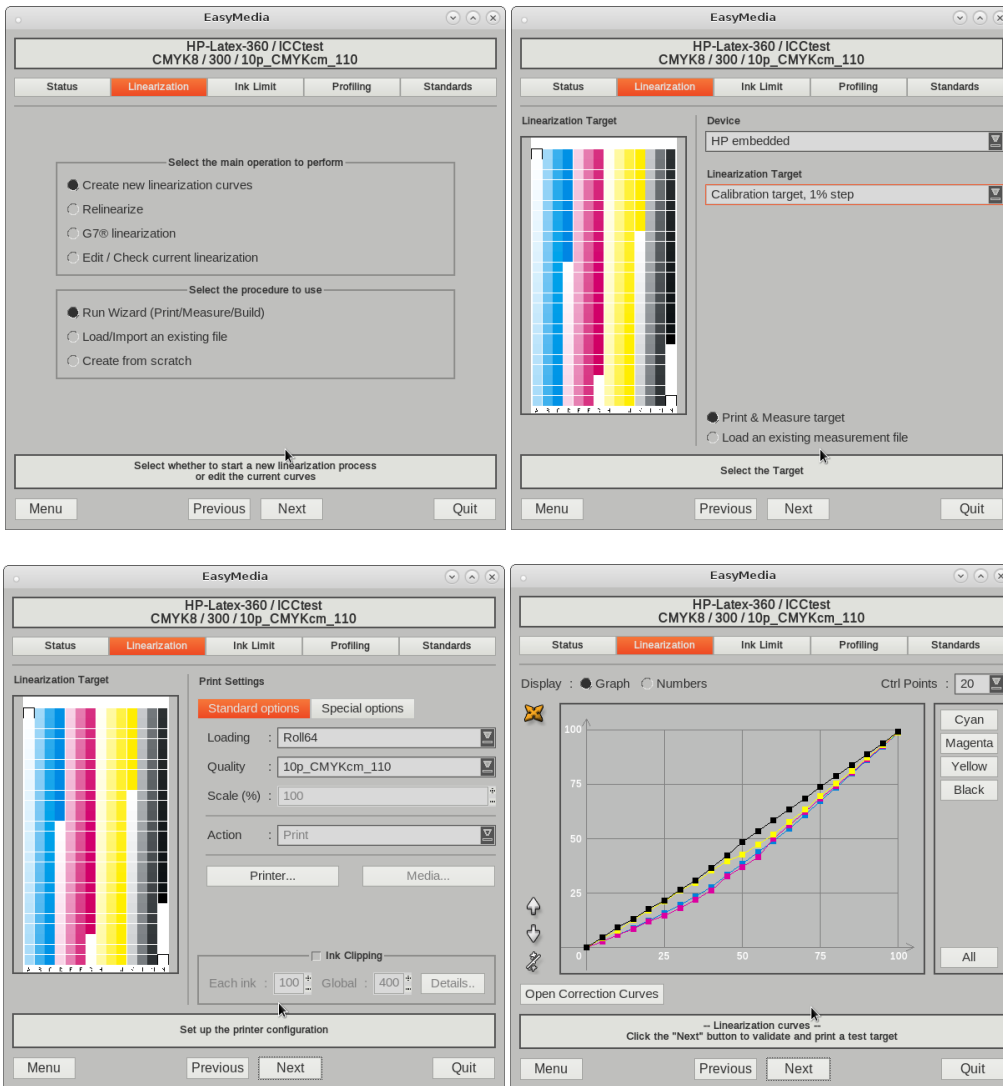
2. Status – Project files.

-Rename the ICC Profile



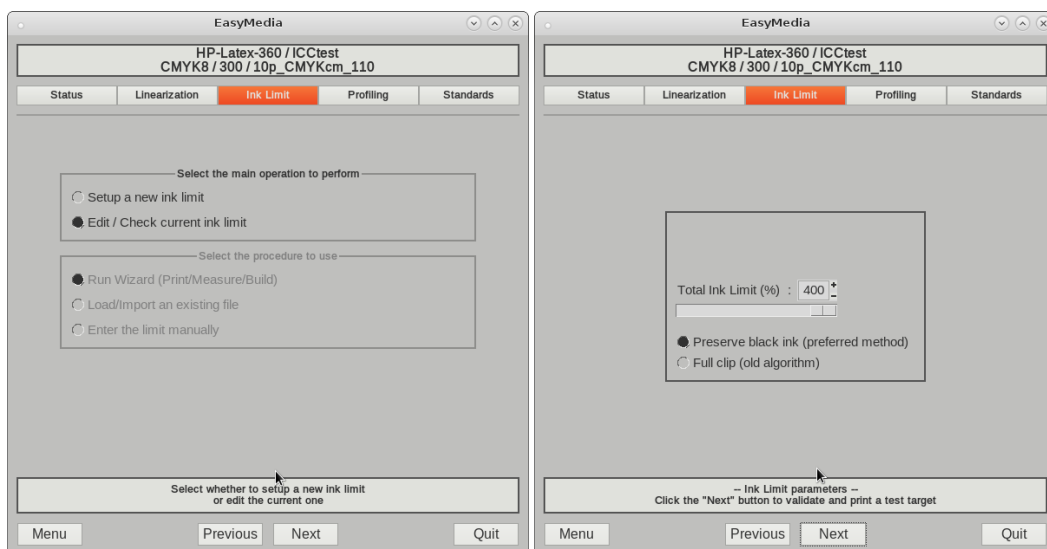
3. Linearization.

- Select the **Create new linearization curves** option
- Select the HP device
- Select **Next** until you reach the next step (Ink Limit)



4. Ink Limit.

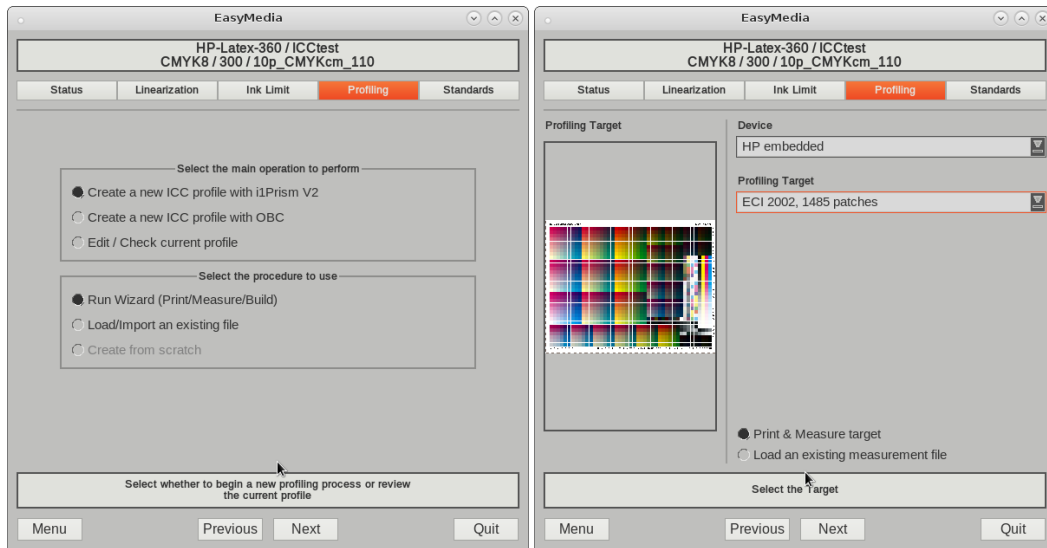
-Select **Next** without making any changes. Since the percentages of ink can be managed from the printer, it is suggested to not make any modifications from the RIP



5. Profiling.

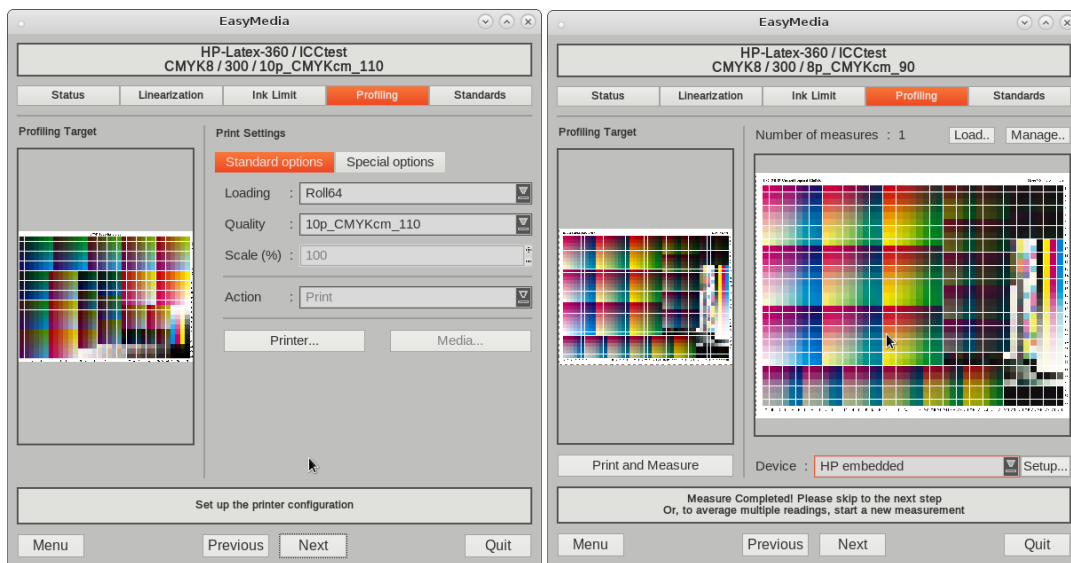
-Select the HP device

-It is recommended to use a standard Profiling Target around 1500 swatches as a rule



-Verify the use of the same print mode quality selected in step 1

-Select **Print and Measure**



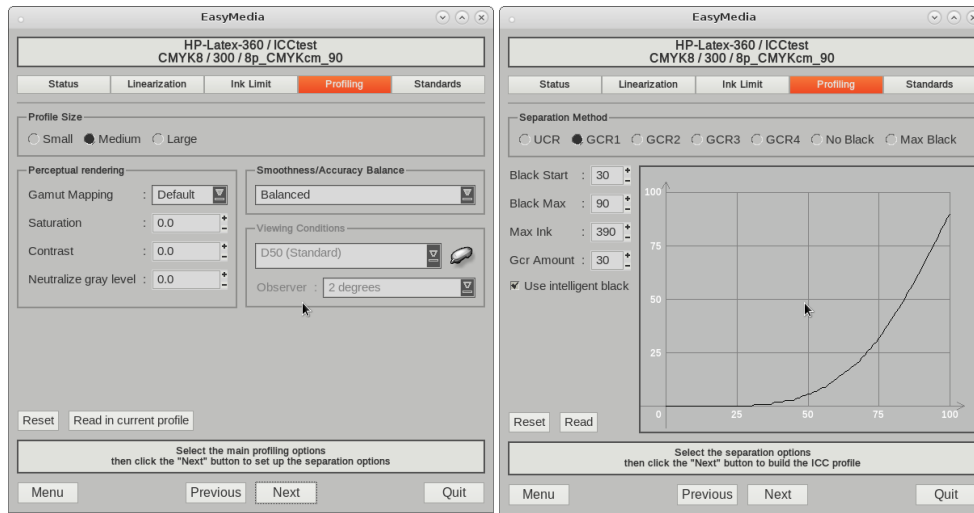
6. ICC Profile settings.

-Once the ICC is ready it is possible to start configuring the settings for the main profiling options

-Remember that all the settings that are shown below are just an example

-The main changes that can be made are changes in:

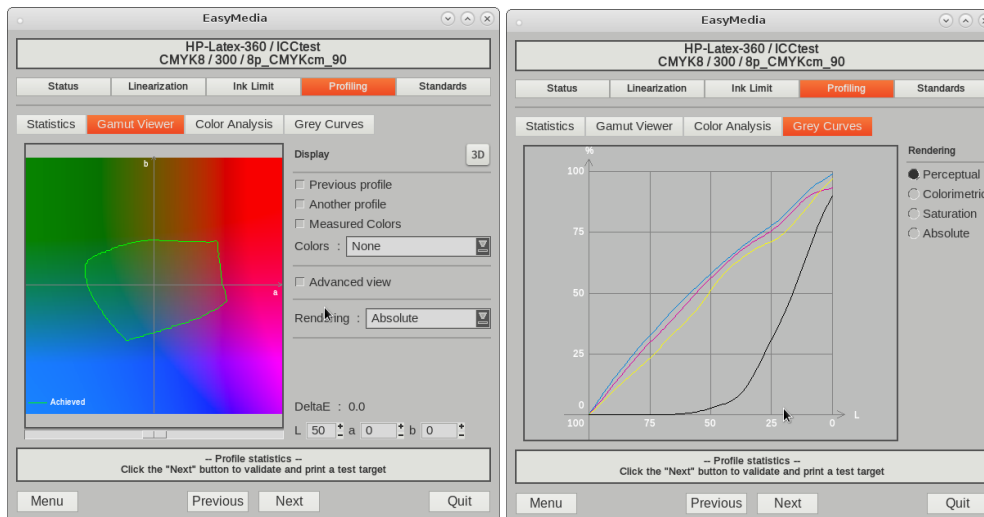
- Profile size
- Perceptual rendering
- Smoothness/accuracy balance
- Separation method



7. Profiling statistics options.

-More options are available here. You can use:

- Statistics
- The Gamut viewer
- Color analysis
- Grey curves



8. Standards and ICC Save .

- Selecting "Quit" will cause the option "Copy ICC profile on printer" to appear. Please click **OK**.
- After this, the ICC profile will be stored internally in the printer, so it will be associated to the media and can be used with any other RIP.
- Even if the media is exported to another printer, remember that because the ICC profile is saved in the printer it can be used for another printer

