

What's New?

Version 11.2

RIP SOFTWARE - VERSION 11 - CALDERA 2018



Table of Contents

Table of Contents	2
Supported OS	3
New Features	4
ContourNesting 180°	4
MultiLayer Printing	5
HelpLinks	6
Enhancements	7
Cut	7
Frame around barcodes	7
Background	7
Rewind at end	8
Color	8
Rosette and Flowers	8
Textile-friendly targets	9
EasyMedia* notes	9
Misc	10
Hardware acceleration GUI	10
Spot channels	10
Spooler files name	11
Spot colors and Special Inks	11
Documentation	12
Manuals	12
HowTo	12
Caldera Hardware Technotes	12
Printer Driver Technotes	12
New Devices	13
Printer drivers	13
Cutter drivers	14
Spectrophotometers	15
And also	15
Dropped Connections	15
Dropped Spectrophotometers	15
Discontinued Drivers	15

License Agreement

Copyright 2018 Caldera. All rights reserved.

All trademarks, logos and brand names mentioned in this publication are property of their respective owners.

All images and photographs here featured are the copyright of their respective owners.

Caldera reserves the right to modify software specifications and content cited in this document without prior notice.

WHAT'S NEW?

Supported OS

Linux

- **Debian Jessie** (Mate Desktop): 8.6, 8.7, 8.8 (8.8 is currently distributed within Caldera Installation Flash Drive, there is no need to reinstall a 8.6 or 8.7 Jessie)
- **Caldera Debian 2.x**

Reminder, the Caldera Debian OS does not support APPE 4. Only Jessie does.

IMPORTANT: Caldera doesn't provide any guarantee about installing Caldera Software on any other version of Debian than the Special Edition built for Caldera or the currently recommended official Debian, since they have not been tested. It may simply not work.

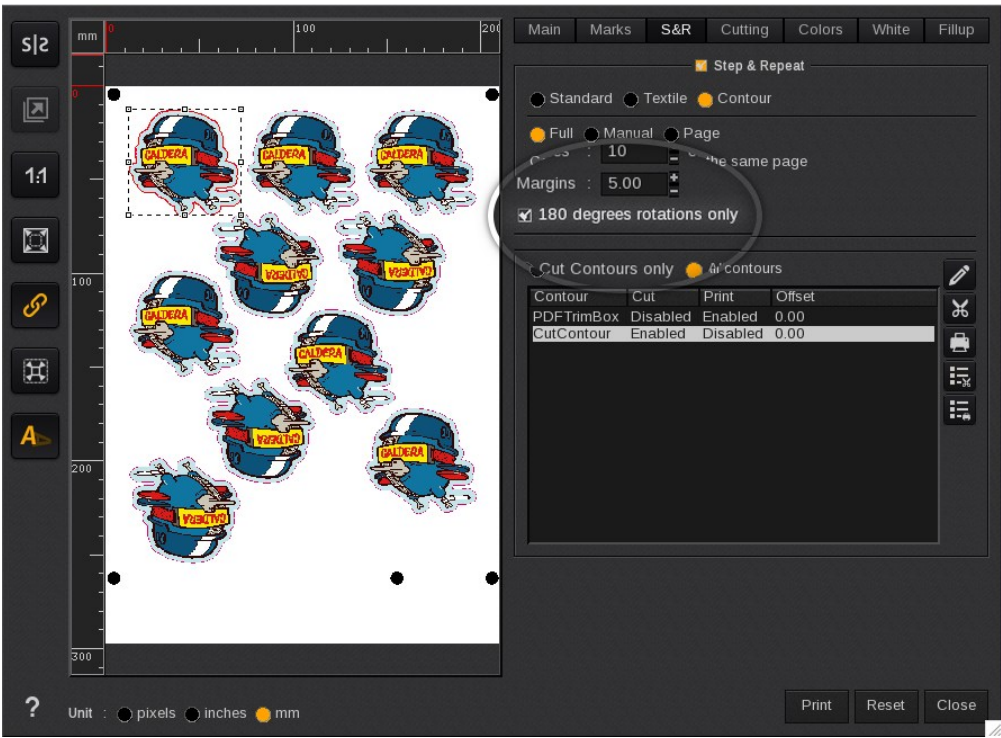
macOS

- 10.9 Mavericks
- 10.10 Yosemite
- 10.11 El Capitan
- 10.12 Sierra
- 10.13 High Sierra

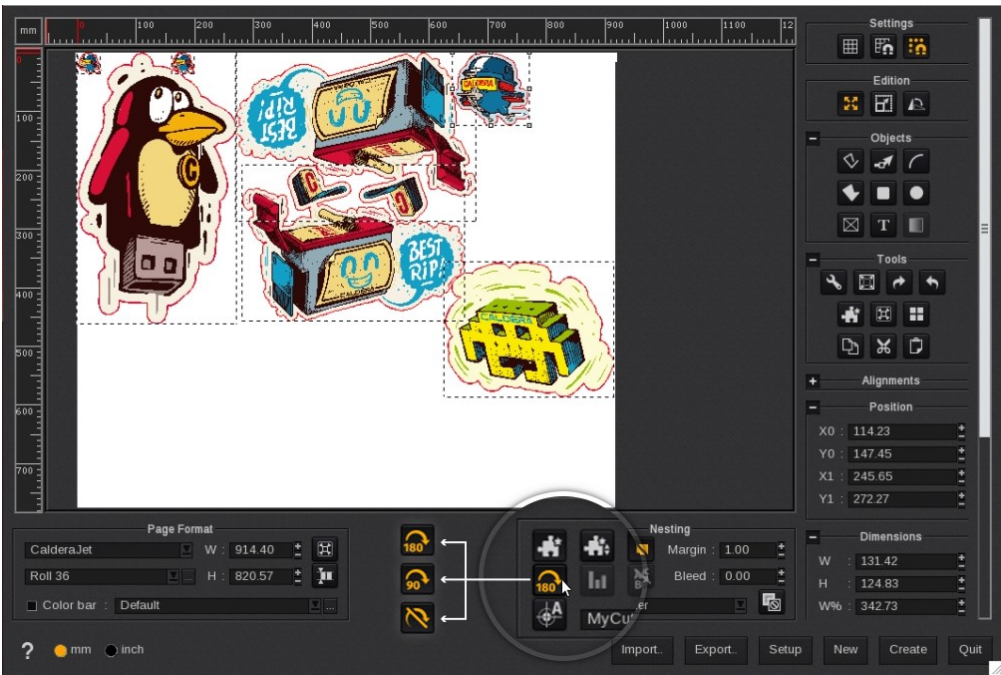
New Features

ContourNesting 180°

New function for **Step&Repeat** and **Compose** interfaces. Now you can save media by printing in accordance with the fiber's orientation. This new function is designed especially for fabric, textile, traffic signs and packaging markets.



New GUI in the Print module.



3 new buttons in Compose: no rotations at all, 90 degrees (0, 90, 180 and 270° allowed) or 180 degrees only (0 and 180).

MultiLayer Printing

Caldera RIP now allows to print multiple layers of different images. See the following list for compatible drivers.

Compatible drivers

New drivers

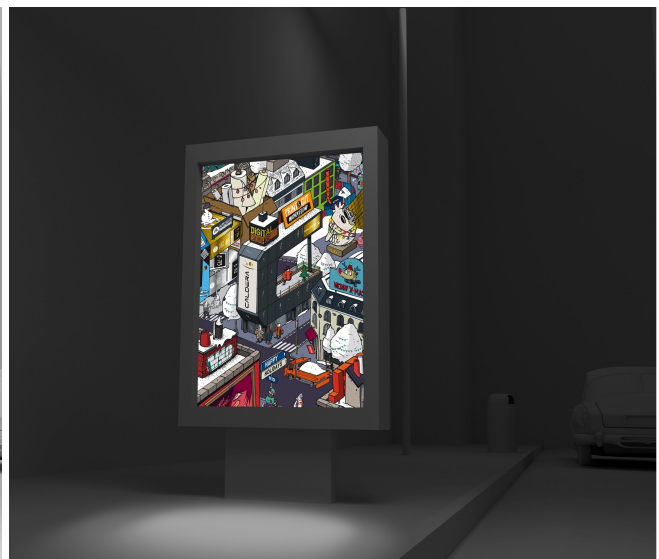
- Roland VersaUV-LEF12i-CMYKWGL-ML
- Roland VersaUV-LEF20-CMYKWGL-ML
- Roland VersaUV-LEF200-CMYKWGL-ML
- Roland VersaUV-LEF200-CMYKWPR-ML
- Roland VersaUV-LEF200-CMYKWW-ML
- Roland VersaUV-LEF300-CMYKWGL-ML
- Roland VersaUV-LEF300-CMYKWGLPR-ML
- Roland VersaUV-LEJ640-CMYKGLW-ML
- Roland VersaUV-LEJ640-CMYKGLGL-ML
- Roland VersaUV-LEJ640-CMYKWW-ML

Updated drivers

- Mimaki-UJF3042-CMYKWW
- Mimaki-UJF3042-CMYKWWCL
- Mimaki-UJF3042HG-CMYKCLPWW
- Mimaki-UJF6042-CMYKCLPWW
- Mimaki-UJF3042HG-CMYKCMWW



Example of use of the multilayer option: sandwich mode.

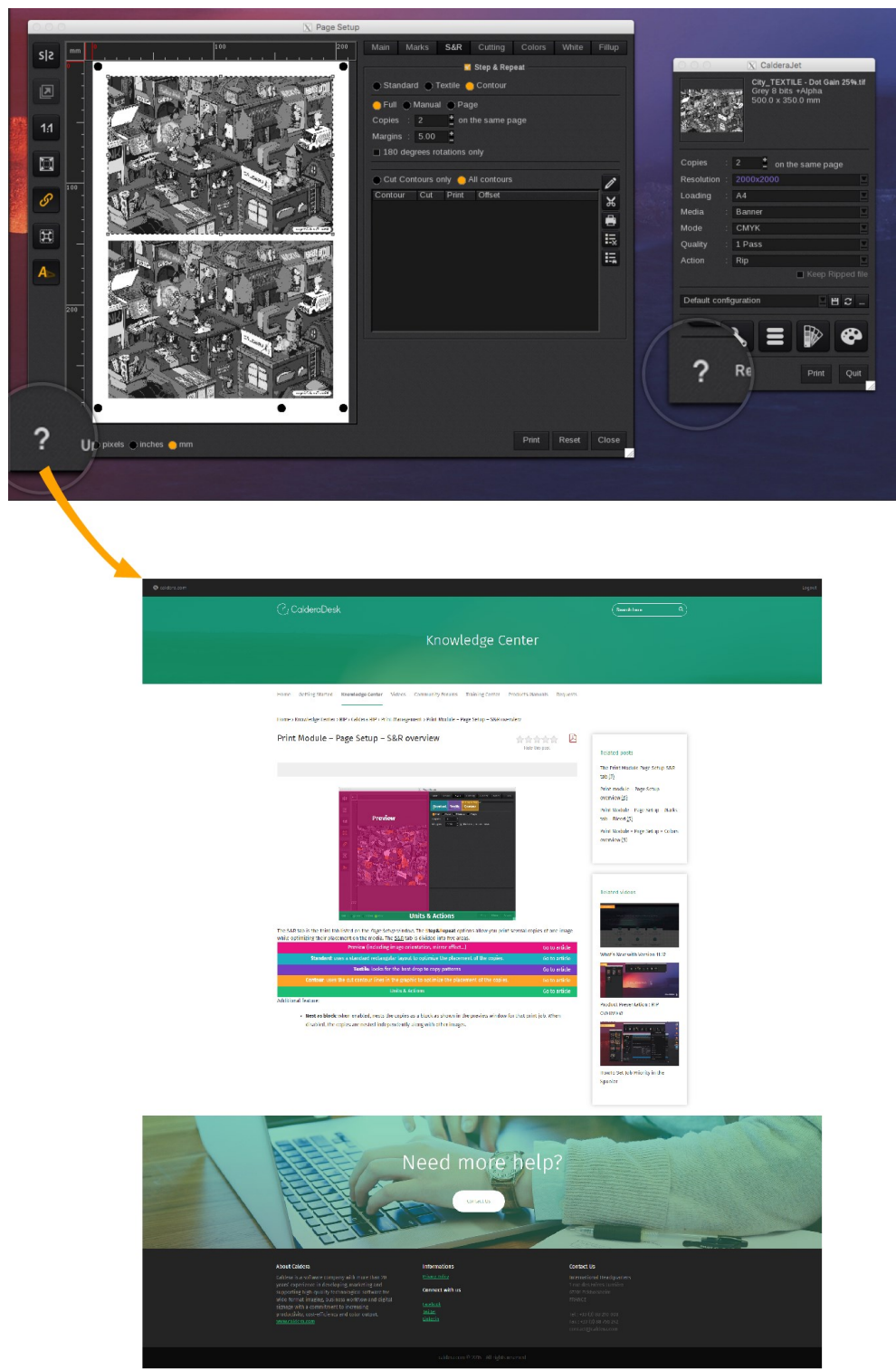


Example of application with back light OFF and ON. The image appears differently in daytime and nighttime.

HelpLinks

Addition of direct contextual links from **Caldera RIP**'s modules of to **CalderaDesk** overview pages. Always located at the bottom left and becomes green as you mouse-over.

You must have a Caldera account to login to CalderaDesk.

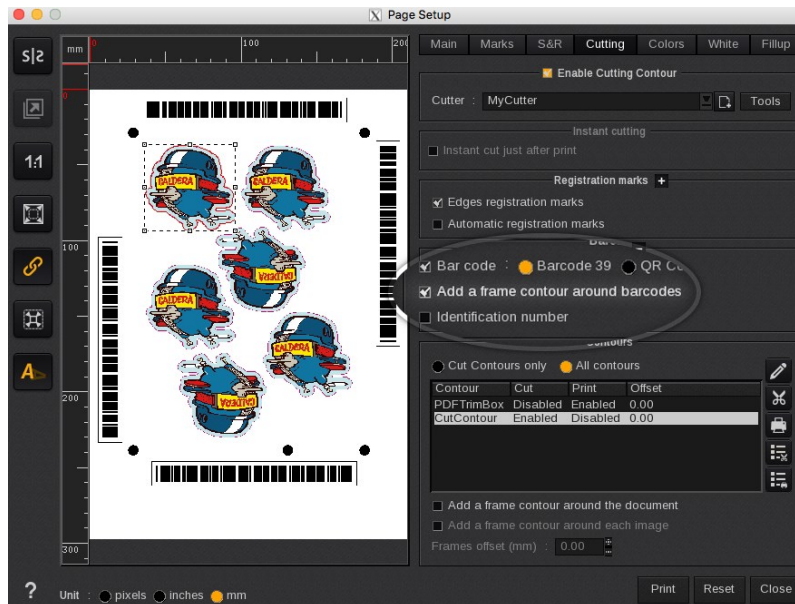


Enhancements

Cut

Frame around barcodes

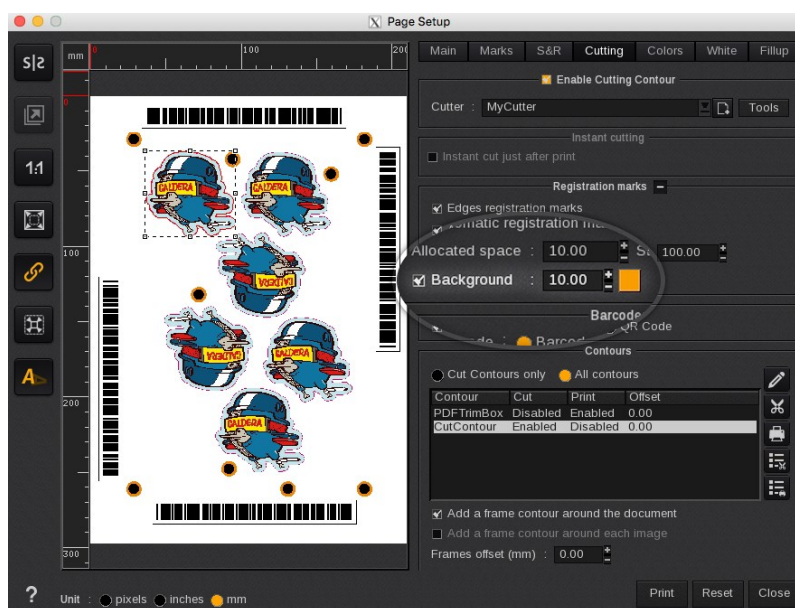
From the Cutting tab you can **Add a Cuttable frame around barcodes or QR codes.**



Background

Only for GrandCut.

This new option, useful for backlit, lets the user define the color of the current white space around registration marks.



ENHANCEMENTS

Rewind at end

From the VisualCut interface (see the list of support cutters below), you can select the **Rewind at end** option. Thus, the user can:

- rewind the media after cutting to allow the change of the blade
- go to the end of the job to be closer to next job

Supported Roll cutters

- **Graphtec:** FC7000, FC8000, CE6000, FC8600
- **Roland:** GX, GS, CAMM-1 GR
- **Mutoh:** SC-Pro, Kona
- **GCC:** all
- **Mimaki:** CG-FX, CG-SR*, FL605RT

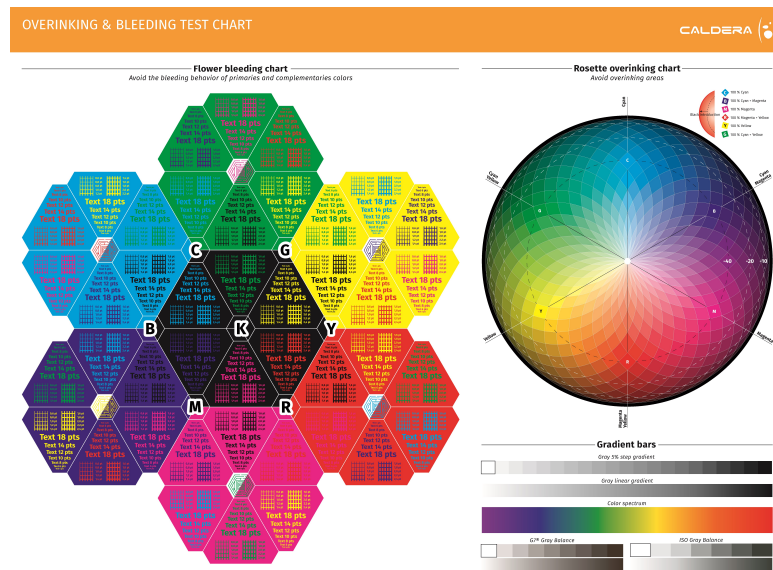


Color

Rosette and Flowers

New charts created to improve the ink limitation:

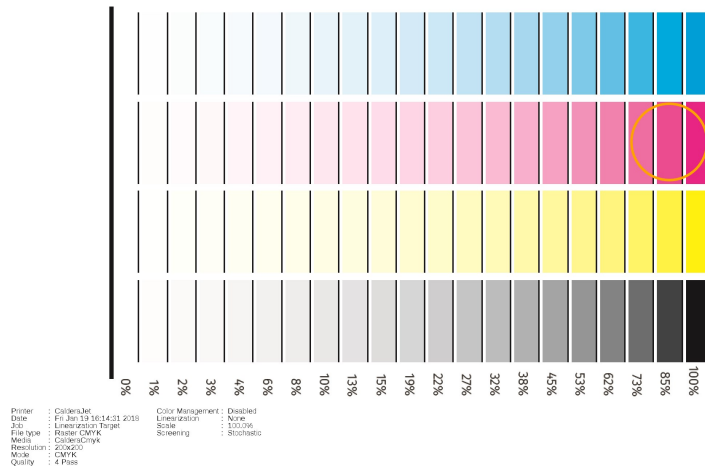
- Flower Bleeding
- Rosette Overinking: Migration effect, White lines cropped, Wet ink



WHAT'S NEW?

Textile-friendly targets

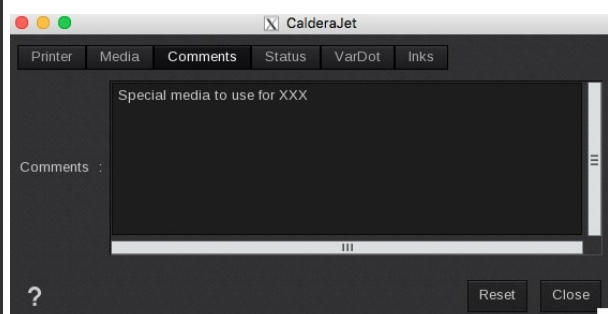
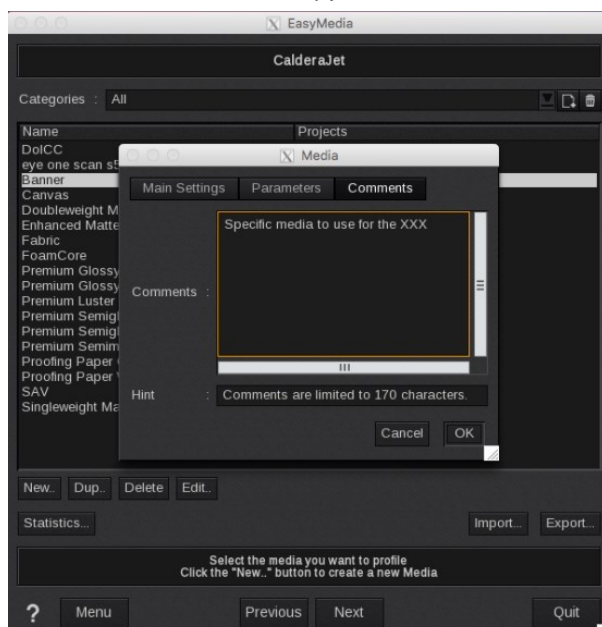
New Textile-friendly targets (transitions, linearisations and N-Color) with the automatic generation of double-gap targets for better textile measurements. Mainly useful for textile markets. They can be used for i1Pro/2 and i1iO/i1iO2 spectrophotometers.



EasyMedia* notes

*EasyMedia is named ProfileExpert in the TextilePro interface.

Now you can add free text at calibration creation that can be seen in the **Print** module or in the **Spooler** (170 characters maximum). As an example, for Soft Signage you can add info as heat press, temperature, pressure. For textiles, you can type how to handle the media, the type of the ink, etc.

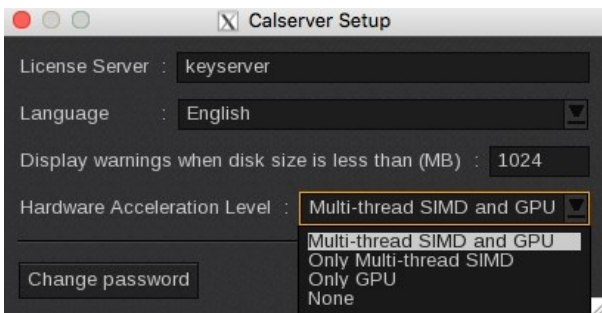


Misc

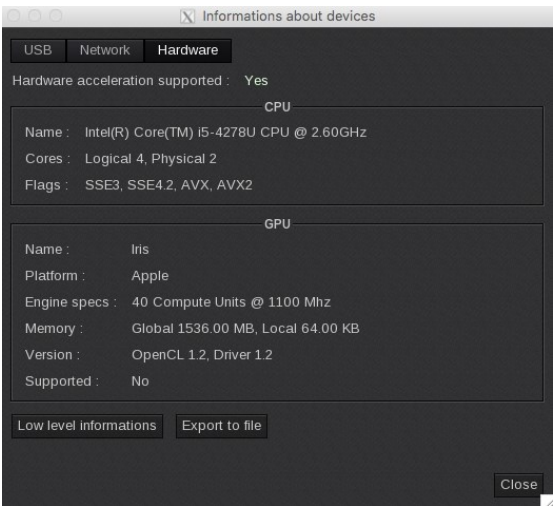
Hardware acceleration GUI

From **ServerAdmin** you can now access to **Hardware Information** and select the level of acceleration. In the *Information about devices* window, a new tab appears to access and export low-level information.

SIMD (Single Instruction, Multiple Data) is an acronym used to define the parallelization on the CPU.



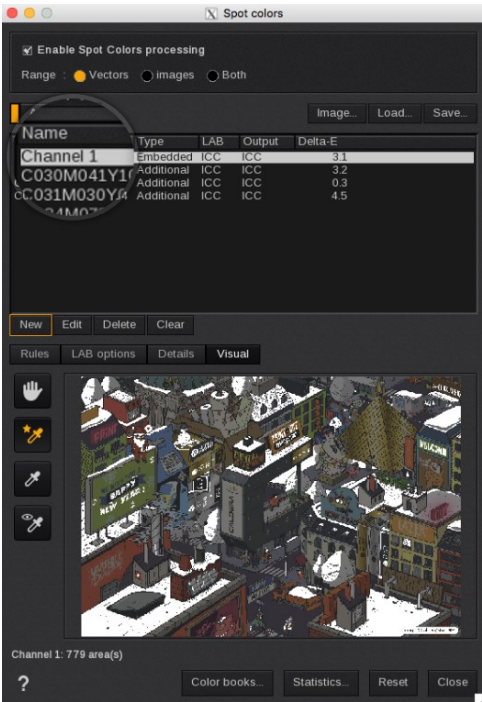
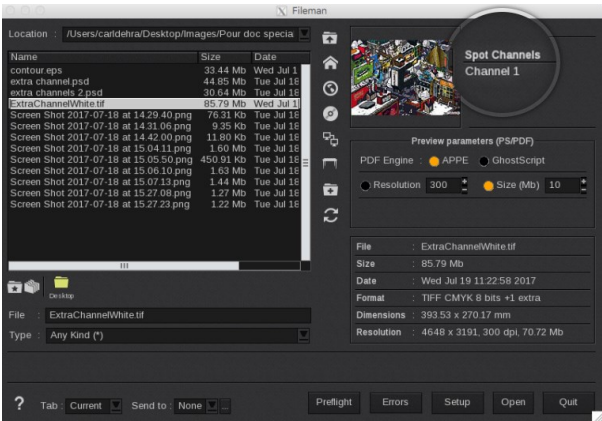
Selection of Hardware Acceleration Level.



New Hardware tab.

Spot channels

Extra-plans are now loaded as spot colors. Loading of Tiff and PSD files with extra-plans is twice faster. Loading extra-plans as spot colors allows you to keep remapping with white and varnish but also managing extra plans with spot colors remapping.

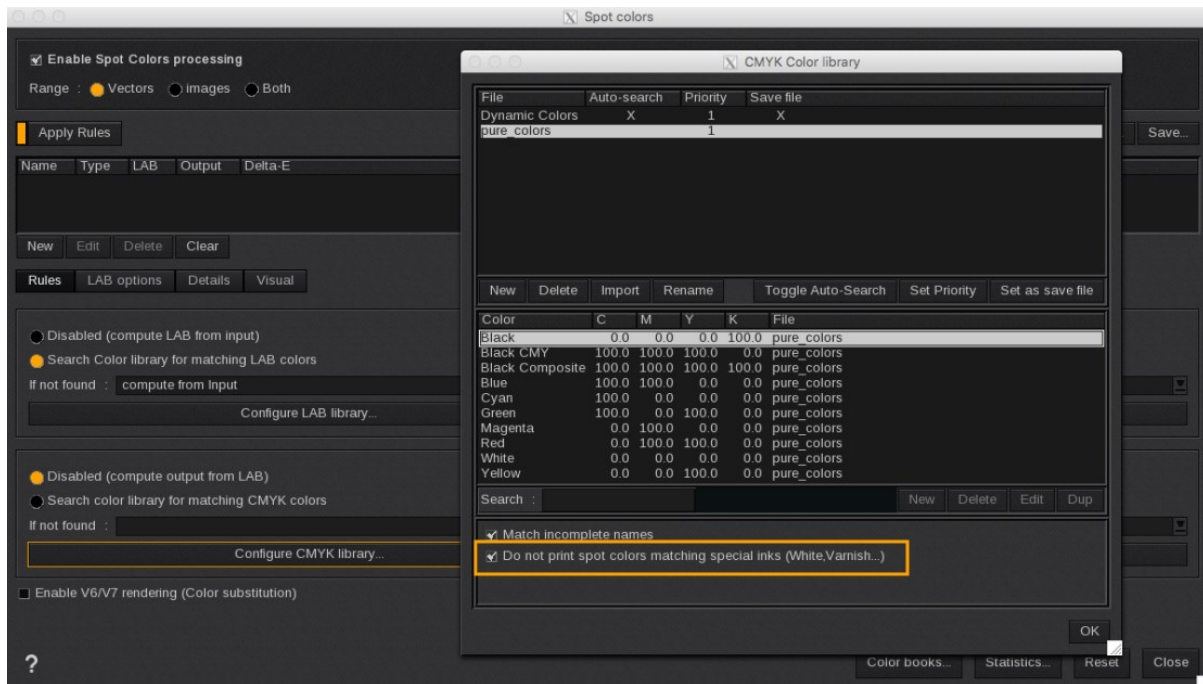


Spooler files name

In the **Spooler**, files names are now limited to 256 characters (instead of 64).

Spot colors and Special Inks

New option **Do not print spot colors matching special inks** available in the *CMYK color library* configuration window.



Documentation

Manuals

New

- Print module [EN]
- Linux Support Tools [EN]

Updated

- Caldera RIP [EN+FR]
- Spooler [EN+FR]
- GrandCut [EN]
- VisualCut [EN]
- Step&Repeat [EN]

HowTo

New

- Uninstall Caldera on Mac [EN+FR]
- The EasySelect feature [FR]

Updated

- The EasySelect feature [EN]
- Use the ExtraMarks [EN]
- Use ContourNesting [EN]
- Create an EasyMedia Project [EN]

Caldera Hardware Technotes

Updated

- Caldera C1 [EN+FR+ES]
- Caldera C2 [EN+FR]
- Caldera C3 [EN+FR]
- Caldera C4 [EN+FR]

Printer Driver Technotes

New

- Canon imagePROGRAF Pro [EN+FR]
- Canon imagePROGRAF TX [EN+FR]
- Epson SureColor F9300 [EN+FR]
- Epson SureColor S80600 [EN+FR]
- HP Latex GFP [EN+FR]
- Océ Colorado 1640 (UVgel) [EN+FR]
- Roland VersaUV-LEF [EN+FR]

Updated

- Canon IPFPro2000, 4000, 4000S, 6000S [EN+FR]
- Epson SureColor P5000, P10000, P20000 [EN+FR]
- Fujifilm Acuity LED3200R [EN+FR]
- HP DesignJet Z6600-Z6800 [EN+FR]
- HP Latex 11x/3xx/5x0 [EN+FR]
- HP PageWide XL4000, XL5000, XL8000 [EN+FR]
- Mimaki UJV55 [EN+FR]
- Roland SG, VG [EN+FR]
- KIP 8X0, 940 [EN+FR]

New Devices

Printer drivers

Agfa

- Tacana 3200-RTR

AMPLA

- CROMAX
- SAMBA-RR-UV
- SAMBA-RR

Canon

- IPFPRO 6000
- imagePROGRAF TX 2000
- imagePROGRAF TX 3000
- imagePROGRAF TX 4000

DGI

- DGI-FH-3204

Durst

- Rho-312R-Plus
- Rho-512R-Plus

EFI

- EFI-Pro-16H

Epson

- SureColor B9000
- SureColor F9300

Fujifilm

- Acuity-15

Gandy-Digital

- Kre8tor

GCC

- JF-240UV
- MPC-240UV

HP

- Latex 3200
- Latex 3600
- Latex 115

Inktec

- Jetrix Lxi8

Konica-Minolta

- NassengerSP-1

NEW DEVICES

LDP

- LDP-GUV
- LDP-IUV
- LDP-xxK3
- LDP-xxK3L
- LDP-xxR5
- LDP-xxR5L

Macarbox

- Macarbox InkJet

MTEX

- MTEX-500C
- MTEX-500P
- Turbo-Sub

Mutoh

- ValueJet-1604WX
- ValueJet-1948WX

Océ

- Colorado 1640 (UVgel)

Roland

- VersaUV-LEF12i
- VersaUV-LEF200

SPG

- DPOB_1300
- Javelin
- PIKE

SPS

- Shark-E72s

Vanguard

- Vanguard VT

Cutter drivers

HP

- Latex Cutter

Valiani

- Mat Pro Ultra V
- Optima V

Spectrophotometers

A solution for high-end color management, TotalColor's versatile and automated table measures a vast range of media used in any printing technology. M0/M1/M2 measurements are now available as well as an Ethernet connection. The TotalColor qb spectrophotometer which includes a handled head and an auto-positionnning camera is up to three times faster than a regular TotalCor.



Spectrophotometers drivers

- TotalColor qb
- Barbieri Spectro LFP qb

And also

Dropped Connections

Firewire and SCSI connections have been dropped in **V11.1**. Firewire connection drop in Drivers for:

- Canon
 - W2200, W6200, W6400, W7200, W7250, W8200, W8400

Dropped Spectrophotometers

Since V11.0

- X-Rite
 - DTP 41
 - DTP 32
 - DTP 34
 - DTP 20

Discontinued Drivers

Since V11.1

Due to Firewire drop:

- Mimaki
 - JV3

Due to SCSI drop:

- Xerox
 - X2, XPress
- Seiko
 - IP4500, IP6600

Share your Caldera experience and discover our online help on:
calderadesk.caldera.com

CALDERA - 1 rue des Frères Lumière - P.A. d'Eckbolsheim
BP 78002 - 67038 Strasbourg Cedex 2 - France

www.caldera.com - Tel. +33 388 210 000 - Fax +33 388 756 242 - contact@caldera.com