



# How to use the HP Latex Substrate Feed Accessory



July 2021

## Contents

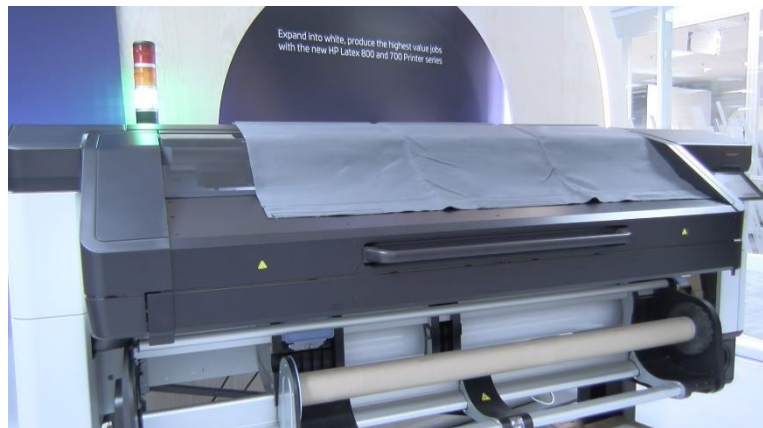
Loading .....	3
Attaching to the Take Up Reel on the fly.....	6
Storage .....	7
Important information.....	7
Considerations.....	9

The HP Latex Substrate Feed Accessory enables printing from pinches with most substrates, improving the success rate of plots and reducing substrate waste resulting from attachment to the take-up-reel. This accessory is for use with substrates having a width of 48” or greater.

The information below can also be found in the User Guide.

## Loading

1. Load the substrate as usual.
2. Place the HP Latex Substrate Feed Accessory on top of the printer with the weights toward the back and the magnets toward the front:



3. Using the controls on the front panel, advance the substrate forward past the curing module so that it can be looped back to meet the magnets of the HP Latex Substrate Feed Accessory. When looped, the back side of the substrate will be facing up.

---

**TIP:** For more rigid materials, it may be necessary to advance the substrate further in order to prevent unwanted wrinkles on the clean substrate.

---

4. Separate the magnets.
5. Place the leading edge of the substrate between the two flaps and align the HP Latex Substrate Feed Accessory with the rightmost edge of the substrate.

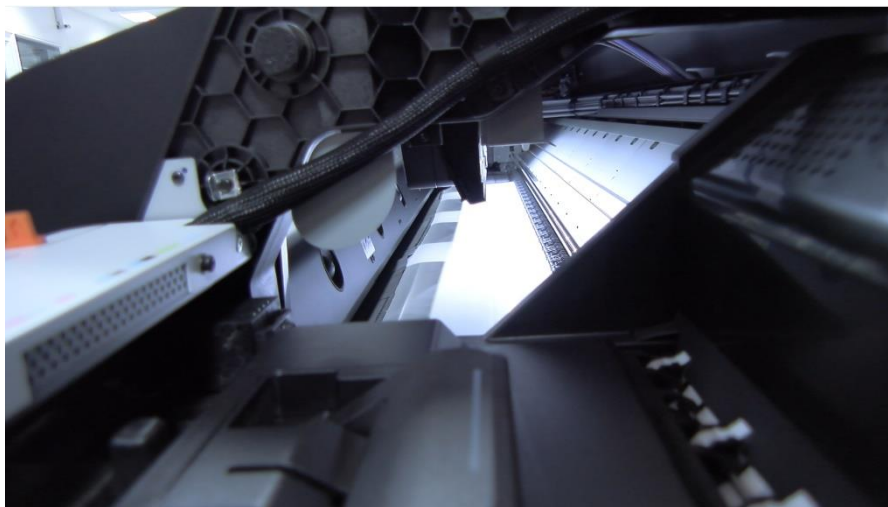
6. Close the flap by putting the magnets together:

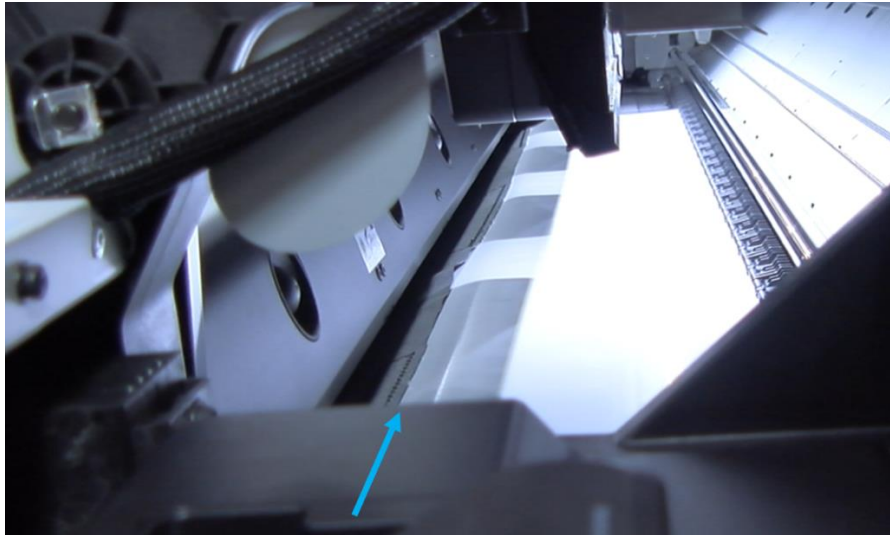


7. Take the weights from the top of the printer and place them on the ground:



8. Using the controls on the front panel, rewind the substrate with the HP Latex Substrate Feed Accessory attached so that the magnets sit just past the print zone cutter:





---

**NOTE:** Rewinding too far may cause the HP Latex Substrate Feed Accessory to become disconnected from the substrate or may cause wrinkles to form in the print zone.

---

**TIP:** Use the print zone window to monitor the position of the magnets. In the L800, the overhang length from the curing module is 24 cm; in the L700 the overhang length is 30 cm.

---



9. The substrate is now ready to print.
10. Once the weights have reached the ground, the HP Latex Substrate Feed Accessory may be removed by hand.

---

**NOTE:** The HP Latex Substrate Feed Accessory must be removed carefully. Please avoid any forceful movements of the substrate.

---



**CAUTION!** The magnets may be hot after passing through the curing module.

---

## Attaching to the Take Up Reel on the fly

1. Before sending a plot, prepare the Take Up Reel with the desired core.
2. Print as normal.
3. Once the HP Latex Substrate Feed Accessory weights reach the ground, carefully remove the HP Latex Substrate Feed Accessory:



4. Once the substrate's leading edge reaches the Take Up Reel, attach the center section of the substrate to the core.

---

**TIP:** Take care to not shift substrates, as this may affect print quality and alignment.

---

**NOTE:** As the substrate is still advancing, this process has a short time window, after which it will not be possible to attach it to the Take Up Reel.

---

5. Allow the substrate to advance, providing some slack to the Take Up Reel.
6. Activate the Take Up Reel by turning the wheel.
7. The substrate is now attached to the Take Up Reel and will continue printing as normal.

---

**TIP:** To ensure proper winding, flatten the corners of the substrate after one turn so that they do not become folded in the roll.

---

## Storage

When not in use, the HP Latex Substrate Feed Accessory should be folded in 3 sections and rolled up for storage:



## Important information

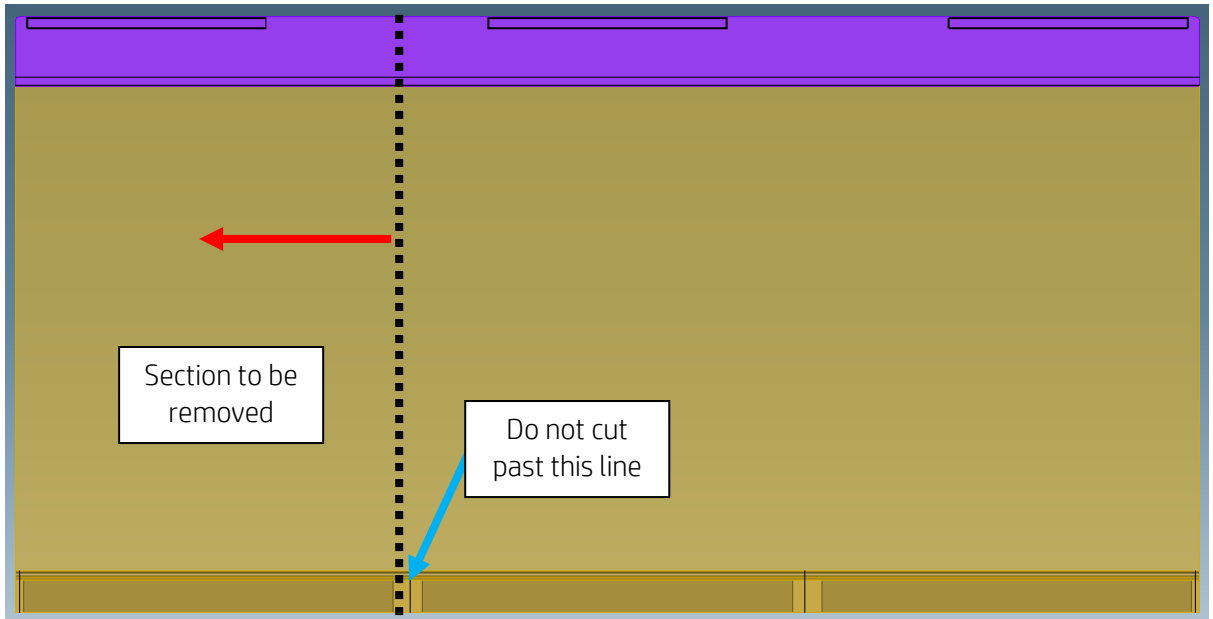
- *For use with substrates having widths 48" or greater:*

For substrates between 48" and 54" it is necessary attend to the printer during the initial warmup movements, if activated. Since the HP Latex Substrate Feed Accessory is wider than the media, it is possible for the top left corner of the accessory to fold over upon exiting the curing module, which may cause it to crash against the curtain on re-entry. It is recommended to guide the HP Latex Substrate Feed Accessory back into the curing to ensure proper alignment of the accessory.

- *For use with substrates having widths <48":*

If it is desired to use the HP Latex Substrate Feed Accessory with substrates having widths less than 48", HP recommends trimming the accessory vertically to remove the leftmost weight:

- Take care to not trim past the sewn line securing the middle weight:



- *How to use the Edge Holders with the HP Latex Substrate Feed Accessory:*

Edge Holders may be used with the HP Latex Substrate Feed Accessory.

The steps are as follows:

1. Install the Edge Holders on the print zone platen in the parking position, but do not place them over the substrate.
2. Load the HP Latex Substrate Feed Accessory.
3. Once the HP Latex Substrate Feed Accessory is loaded, place the Edge Holders over the substrate.

- *For use with substrates having a default extra top margin greater than 0:*

For optimal performance, the *extra top margin* should be set to 0 using the advanced settings on the front panel for those substrates containing this setting (an extra top margin) by default:



---

## Advanced settings

---

### Substrate movements

Automatic movements during cool-down to avoid substrate overheating and deformations, especially in heat-sensitive substrates. Disable for manual cutting.



### Top margin after loading or cutting (from 0 to 750 mm)

Set value to 0 to start printing from pinches. Set value to 350 or more to start printing from inside the curing module. Set value to 700 or more to start printing past the curing module.



## Considerations

- HP does not recommend using the HP Latex Substrate Feed Accessory with the following substrates:
  - HP Everyday Matte Polypropylene
  - All textiles
  - All wallpapers
- HP does not recommend using the HP Latex Substrate Feed Accessory during the following processes:
  - Printing for tiling applications
  - CLC/APA calibration processes
  - Media advance calibration
- Finally, the HP Latex Substrate Feed Accessory should not be rolled onto the Take Up Reel.