



Firmware PLS_26_21_27.1 is available

For the HP Latex 700/800 Printer Series

September 2021

A new firmware version is now available to download and install for the HP Latex 700/800 Printer series. This firmware includes a range of new features and fixes. HP strongly recommends installing firmware version PLS_26_21_27.1 for all units as it includes significant improvements.

Related links:

www.hp.com/go/latex/

Printers related to this article

HP Latex 700/800 Printer Series

Where to find firmware PLS_26_21_27.1

Web

<http://www8.hp.com/us/en/drivers.html>

Find your product -> Select your OS -> Download the *.fmw file -> Install it via USB or EWS.

Online

About Printer -> Check Updates -> Check Now.

Summary of changes

Here are the improvements achieved with firmware version PLS_26_21_27.1:

1. White printhead cooldown optimization time
2. Improved End of roll workflow
3. New Take-up reel tension modes
4. Improved warning to store white printheads
5. Changing the number of copies of a "held" or "paused" job
6. Bug fixes and performance improvements



White printhead cooldown optimization time

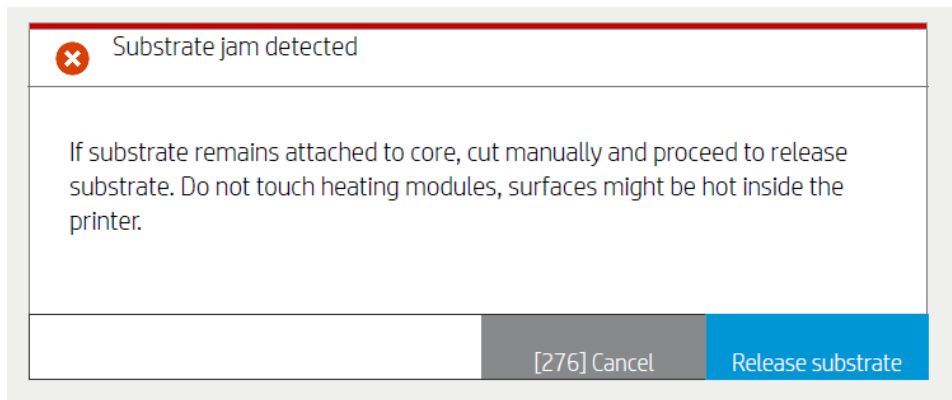
When white printheads must be removed from the carriage to store them in the maintenance wheel and the machine has been printing beforehand, the printheads need to be cooled down to optimize printhead life.

In this release, the cooldown time has been improved from 12 to 8-10 min.

Improved End of roll workflow

Changes

The End of Roll workflow has been improved and it now gives you more guidance on what to do.



New tension modes

Changes

The user will now be able to select between three tension modes when attaching the substrate to the Take-up reel.

This setting is available in the advanced settings and is printmode related.



Advanced settings

Take-up-reel tension mode Do not apply tension ^

Always apply tension

Apply tension only after advancing

Do not apply tension

Substrate movements

Automatic movements during cool-down to avoid substrate overheating and deformations, especially in heat-sensitive substrates. Disable for manual cutting.

Substrate edge position after loading or cutting (from 0 to

Done

Always apply tension

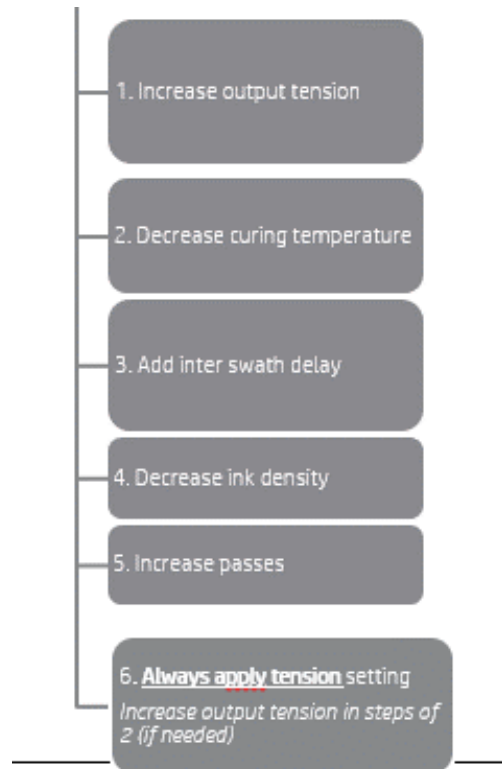
In this new mode, continuous tension is applied.

It is useful when a substrate attached to the Take-up reel starts to wrinkle in the curing chamber (these are also called “curing smears”) as seen in the picture below:





If you experience this kind of defect with the substrate attached to the Take-up reel, you can follow the troubleshooting below:



Apply tension only after advancing

Also called “Tension and release,” this is the standard way to apply tension on the Latex 700/800 Series. This mode is used by default in most substrate categories.

Do not apply tension

This mode simulates the Roll to free fall workflow, but the printed roll is rolled on the Take-up reel.

This mode is applied by default for wallcoverings (SAV excluded).

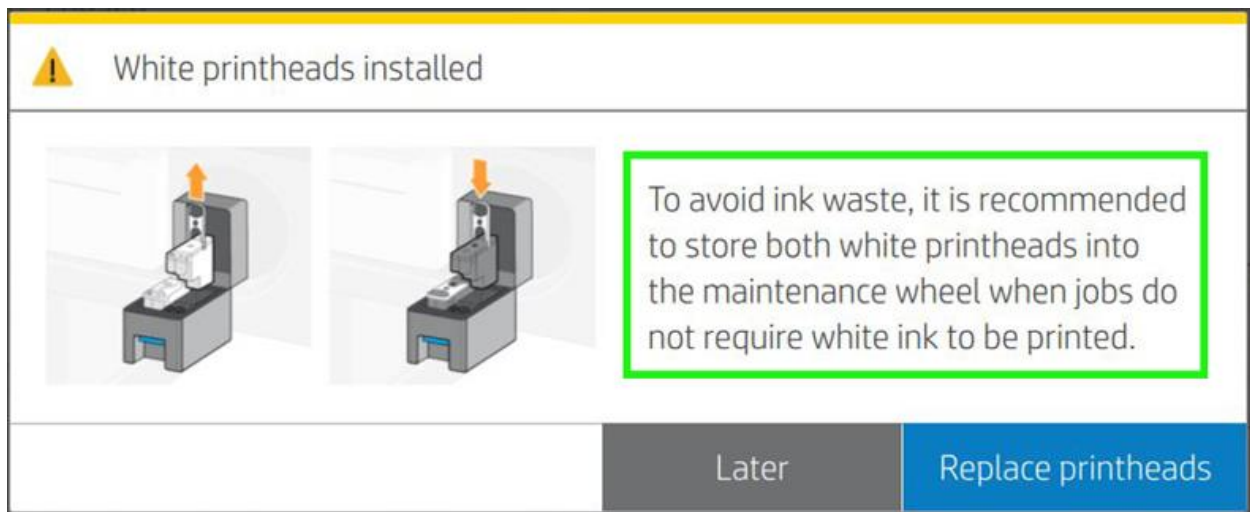
There is nothing new in the advance movement, but the Take-up reel will start rolling the media slower than the media advances, so that a buffer is created between the Curing module and the Take-up reel roll. After (approximately) a meter is printed, the Take-up reel will begin to roll faster, so that the accumulated buffer is almost tense, then will immediately start rolling slowly again to create another buffer. This is how this mode tries to simulate the Roll to free fall printing mode.



Improved warning to store white printheads

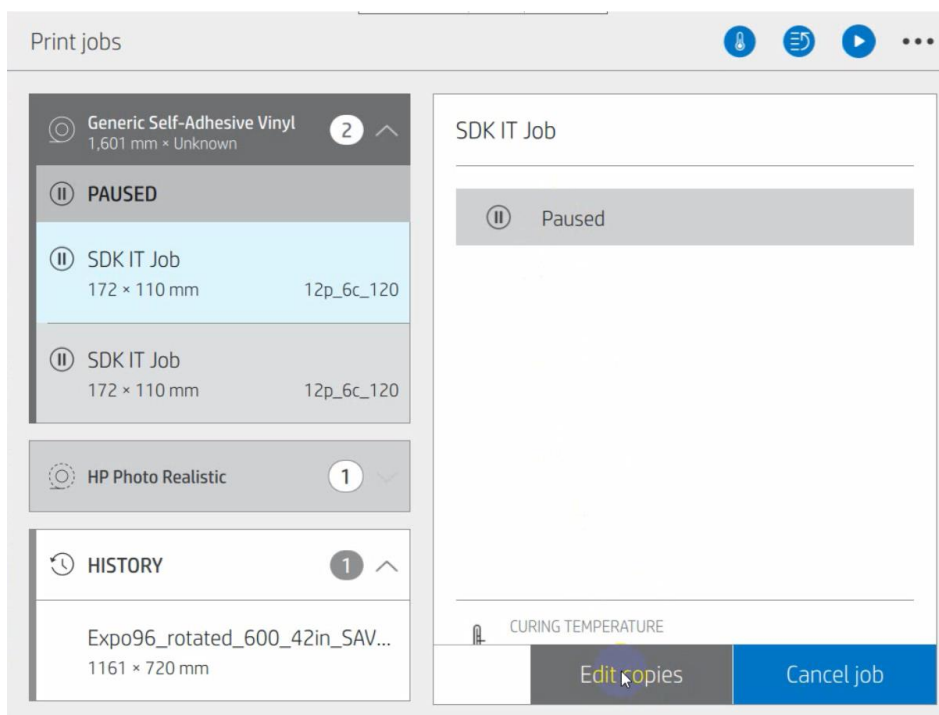
Changes

A message has been added to the existing pop-up to remind you to store the white printheads in the wheel when not in use:



Changing the number of copies of a "held" or "paused" job

With this release you will now be able to add more copies when jobs are in the "on hold" or paused state:





Consideration

Color resources have been changed for all backlit categories. You might experience a change in colors compared to the last firmware.