

# Firmware TYPH\_05\_21\_47.1 is available



For the HP PageWide XL Pro Printer Series

January 2022

A new firmware release is available for the HP PageWide XL Pro Printer Series. This newsletter contains details of the main fixes.

The following models of the HP PageWide XL Pro Printer series are compatible with this firmware release.

- PageWide XL Pro 5200 MFP
- PageWide XL Pro 8200 MFP
- PageWide XL Pro 10000 Printer

## Download Firmware

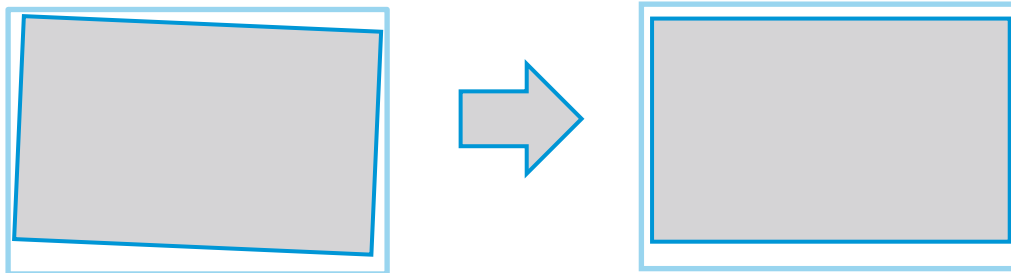
Firmware: TYPH\_05\_21\_47.1.fmw

- Link: <https://support.hp.com/us-en/drivers/printers>

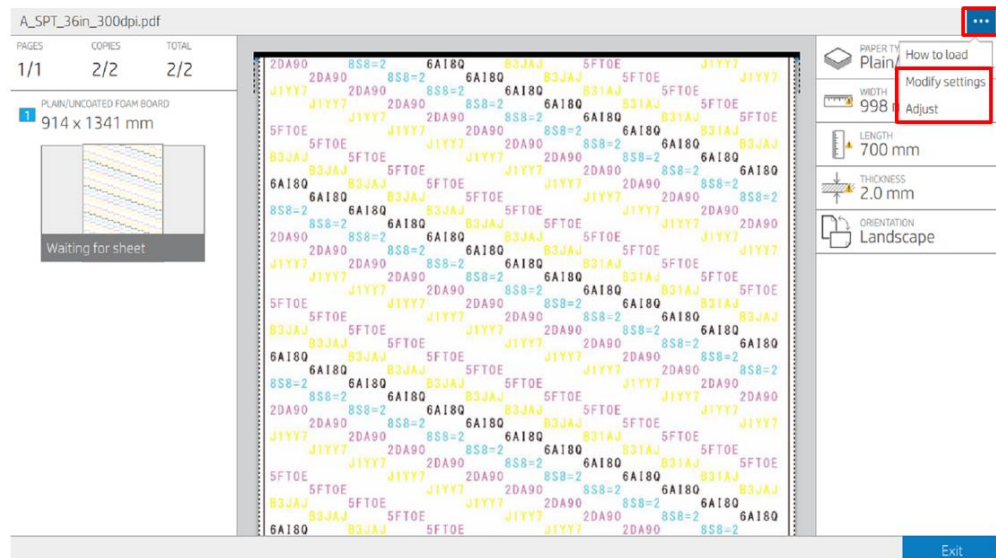
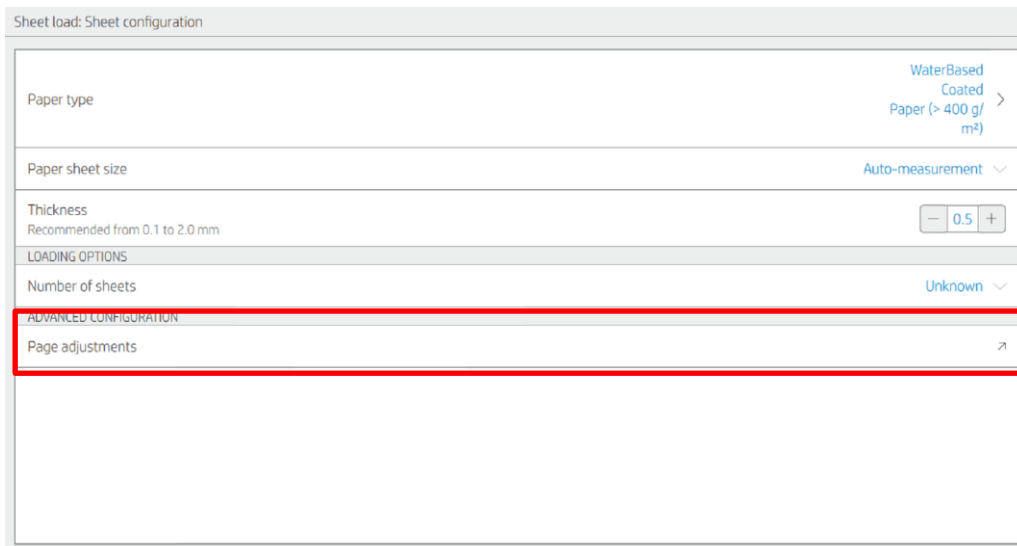
## New functions

### Skew setting included for sheet loading

The ability to rotate an image to correct misalignment between the input tray or the sheet feeder bridge and the media path.



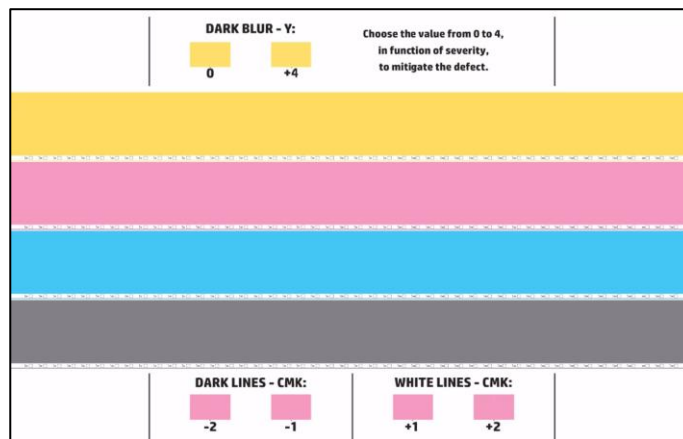
This setting is available when loading media in the Sheet load: Sheet configuration menu under **Page adjustments**. It can also be modified during batch printing for printing foamboards and for double-sided tasks in the sheet feeder (jobs with side A and side B).



### Advanced printhead alignment workflow improvement

For the new calibration introduced in the PageWide XL Pro series that only affects the media profile selected, we introduced a couple of changes to improve the overall process:

- The four calibration plots have been unified into a unique calibration plot. See the following image:



- For cyan, magenta, and black, the parameter can go from -2 to +2. It is important that you select what you see in the key shown. For example, if you have a white line in the magenta band, you must select a positive value of +1 or +2, depending on how intense the white line is.
- For yellow, the parameter goes from 0 to +4. The darker the line you see in the yellow band, the greater number you will need to select.
- After the calibration is done, the values inserted in each of the four colors will be saved. If the operator needs to recalibrate or simply to adjust a couple of printhead dies that overlap, when entering for the second time, the values introduced will be kept automatically. Aside from saving time, this change will significantly decrease the possibility of making a mistake by copying the values one by one.

If an alignment was done in the printer before the FW upgrade, those alignment values will be kept. However, redoing the process is recommended.

### Loading up to 5 mm boards on the sheet feeder bridge

Now we have introduced the possibility of loading foamboard material or thicker cut sheet manually with the bridge of the sheet feeder lowered. The maximum thickness that can be loaded this way is 5 millimeters (≈0.2 inches).

It is important to note that the guide to be used is the sheet feeder bridge guide, not the input tray guide.

To enable this loading process, you must press **Continue anyway** when the front panel displays to lift the Sheet Feeder Bridge.

## Main fixes

- Cases in which the printer froze after entering sleep mode or during the wakeup process will no longer occur
- Intermittent beacon failures upon powering up have been fixed
- Corrected Folder error message when printing folder calibration plot
- Stability improved with sheet feeder:
  - Continuous paper feed after paper jam
  - Ghost paper jams with some skew corrected
  - 89C6-0F12-0000 System Error when page stalls inside the printer corrected
  - Sheet feeder homing now properly done if the cable gets disconnected