



Firmware LYRA_09_00_15.2 is available

For the HP Latex 1500 Printers

July 2022

New firmware and software versions (IPS and Print Care) are available to download for the HP Latex 1500 Printers. HP strongly recommends that all printers are upgraded to the new firmware and software as soon as possible.

Related links:

www.hp.com/go/Latex1500/downloads

Printers related to this article

[HP Latex 1500 Printers](#)

New release available from www.hp.com/go/Latex1500/downloads:

- Firmware: LYRA_09_00_15.2 (Also known as MR8).
- HP Internal Print Server (IPS): v2017.5.56.3
- Print Care: v2.2.5.7

IMPORTANT: Ensure that the printer is connected and able to synchronize, so that Print Care can get proactive update warnings from the HP servers whenever a bug has been fixed or a new version is available.

Upgrade instructions

The three components (FW, IPS and Print Care) must be installed together. No other combination is supported. In this release, an upgrade tool that includes the firmware, IPS software, and Print Care has been developed.

How to upgrade firmware, IPS, and Print Care

- You can unzip it with a third-party tool and execute it, from a USB memory stick.
- You can unzip it with a third-party tool and execute it in the path 'C:\HP\' or 'C:\hp\' or any subfolder inside this one.

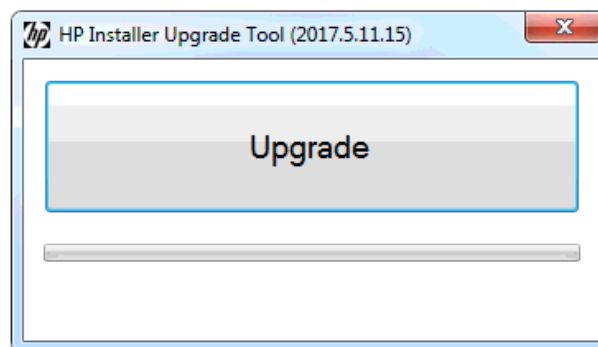
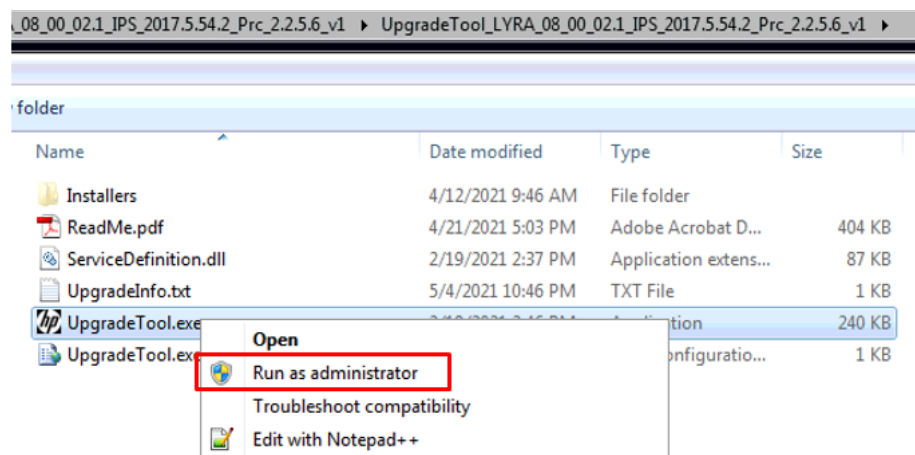
The logs are stored in the IPS computer, at: C:\ProgramData\HP\IPS.

Instructions

- a. Download the UpgradeTool_LYRA_09_00_15.2_IPS_2017.5.56.3_Prc_2.2.5.7.zip file and unzip its contents onto a USB memory stick or inside the path 'C:\HP\' or 'C:\hp\'.

IMPORTANT: If upgrade tool extraction fails on Win10, extract the upgrade tool (.zip folder) to another machine, copy the extracted folder, and execute it from the Win10 IPS PC/Pen Drive.

- b. Execute the Upgrade Tool.exe file by clicking the **Run as administrator** button and then click the **Upgrade** button.

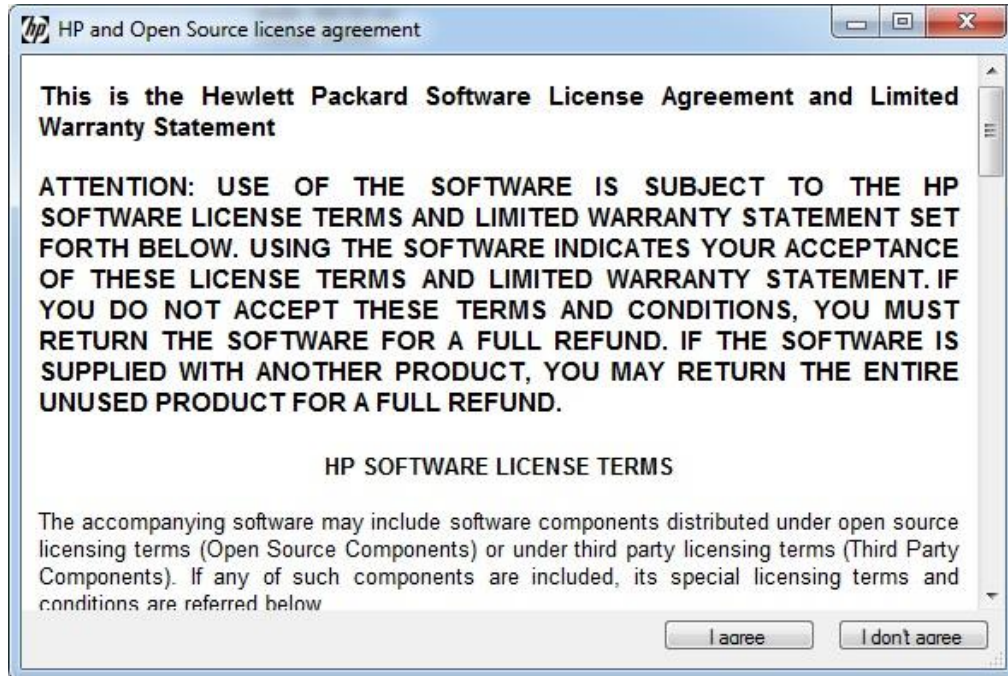


By running this file:

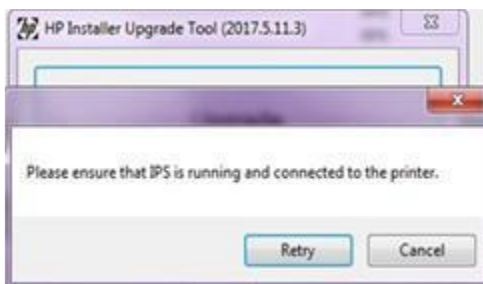
- The FW version will be upgraded.
- The IPS, IPS services, and HP Info Retriever software (if installed) will be uninstalled from the printer's built-in computer.
- The new IPS and IPS services software will be installed.
- Print Care will be upgraded to version 2.2.5.7 and the Print Care patch will be installed.

NOTE: This upgrade tool has to be executed on top of Print Care version 2.2.5.5. While the upgrade tool is executed, it will save the logs to: C:\ProgramData\HP\IPS.

- c. Before the process starts, the following window will pop up, requesting you accept the agreement. Click 'I agree' to start the upgrade process, or 'I don't agree' to abort the upgrade process.



- d. Once the agreement is accepted, the upgrade process will start. If the IPS is not open, the following window will pop up. Click 'Retry' after opening the IPS to continue with the upgrade or press 'Cancel' to cancel installation.

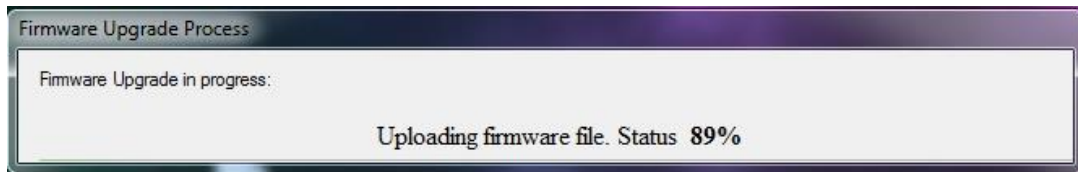


NOTE: If the IPS is open before starting the upgrade process, the window above will not pop up.

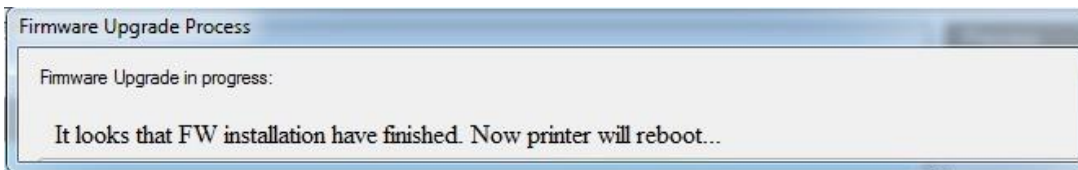
- e. Once the IPS is running and the firmware upgrade process starts, you will see the following window with the FW upgrade report.

NOTE: If the printer has the latest firmware already installed, the installer skips the firmware upgrade step.

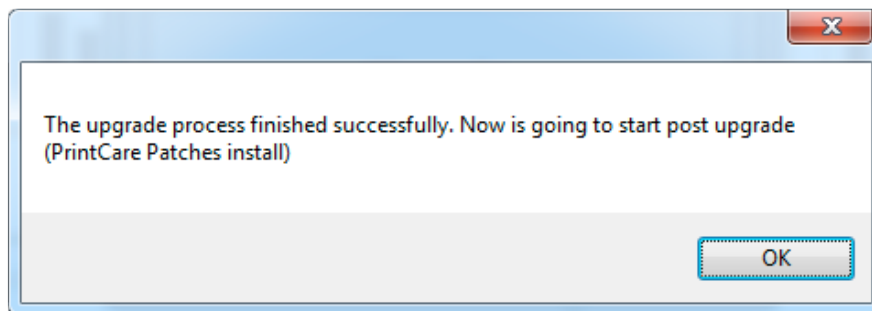
NOTE: In some cases, the new firmware may not be installed. Please refer to Appendix 1 for instructions on troubleshooting this issue.



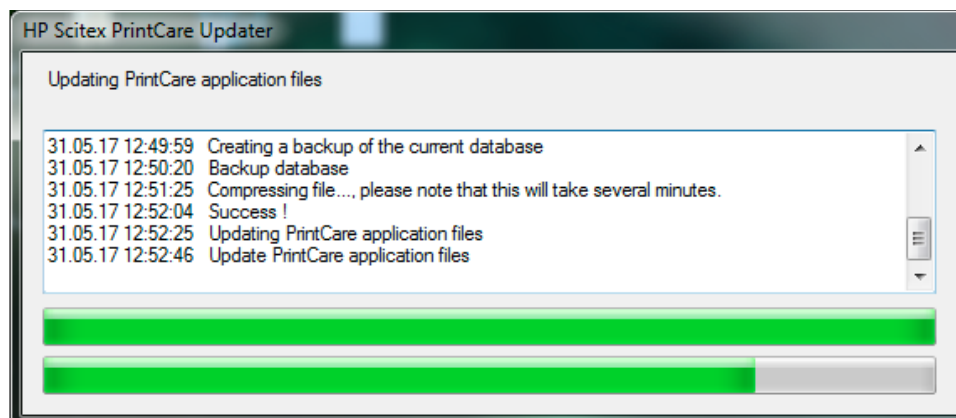
- f. Once the firmware upgrade has finished and the printer starts to boot, you will see the following window before the IPS and Print Care upgrade process starts:



- g. Once the IPS, IPS Services, and Print Care upgrade is completed, the following window will pop up. Click 'OK' to continue with the Print Care patch installation.



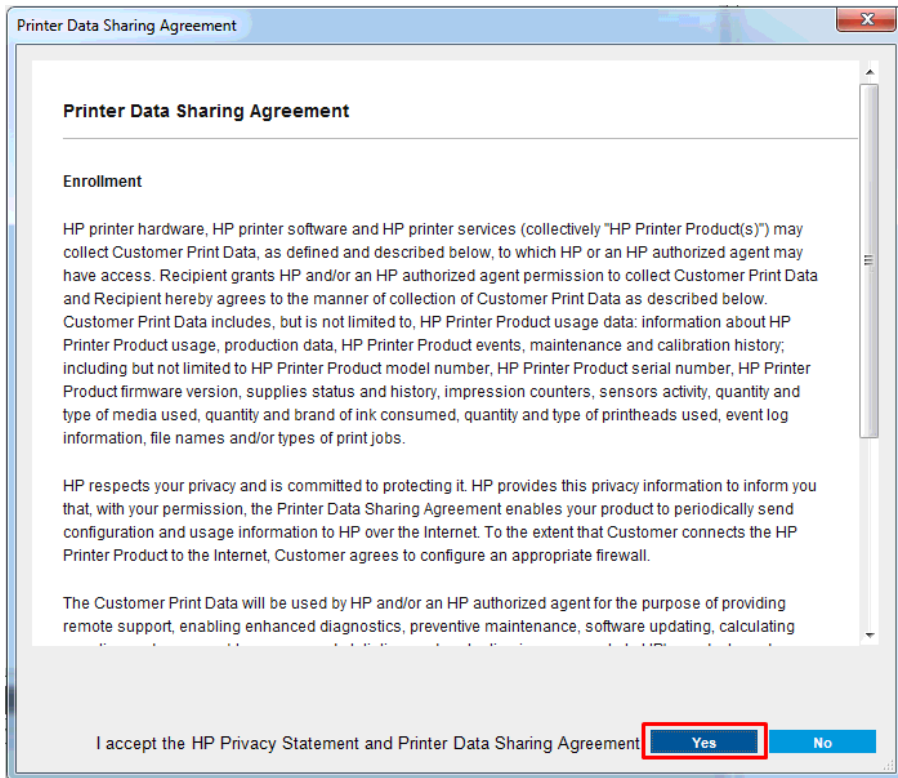
- h. During the Print Care patch's installation, the following window will appear. It closes automatically once installation is complete.



NOTE: If the Upgrade Tool fails at any point, please contact your regular HP support service.

- i. Once the installation process of the IPS is complete, open the IPS application. At first boot, the Printer Data Sharing Agreement (PDSA) window will appear.

HP strongly suggests enabling it to take advantage of InfoRetriever functions, as well as faster and better remote support.



IMPORTANT: Ensure that Print Care can synchronize with the HP database. This can be checked in the Print Care startup window:



If Print Care cannot synchronize, execute the 'HPScitex.Updater.IsMachineCanSync.exe' file and follow the below steps:

- a. Copy the output to Notepad and save it for reporting to HP.
- b. Provide the saved file to lei.helpdesk@hp.com to reactivate it in the database.

Release notes

The FW release includes the following improvements and new functions with respect to previous versions.

New functions:

- Default value for remaining substrate on load

Preferences ×

General Queue Rules Additional Settings Re ◀ ▶

Maximum roll length: cm

Jobs gap: cm

Nesting gap between images: cm

Margins

RIP

Center

Group Center

Default cm

Optimize for Tiling

Print preparation plot at the start of the queue

Print Color Bars

Heating

Heating duration: minute(s)

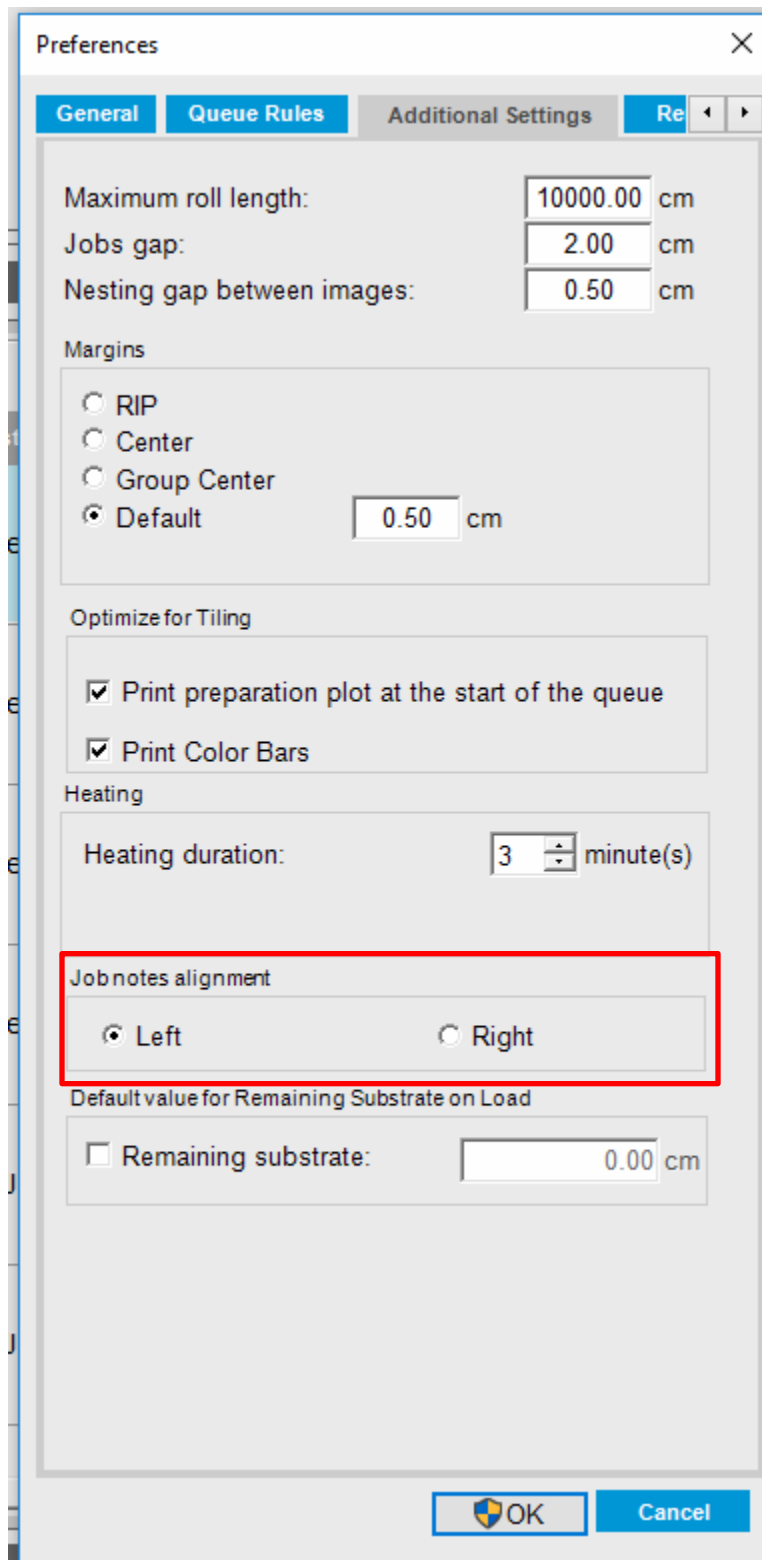
Jobnotes alignment

Left Right

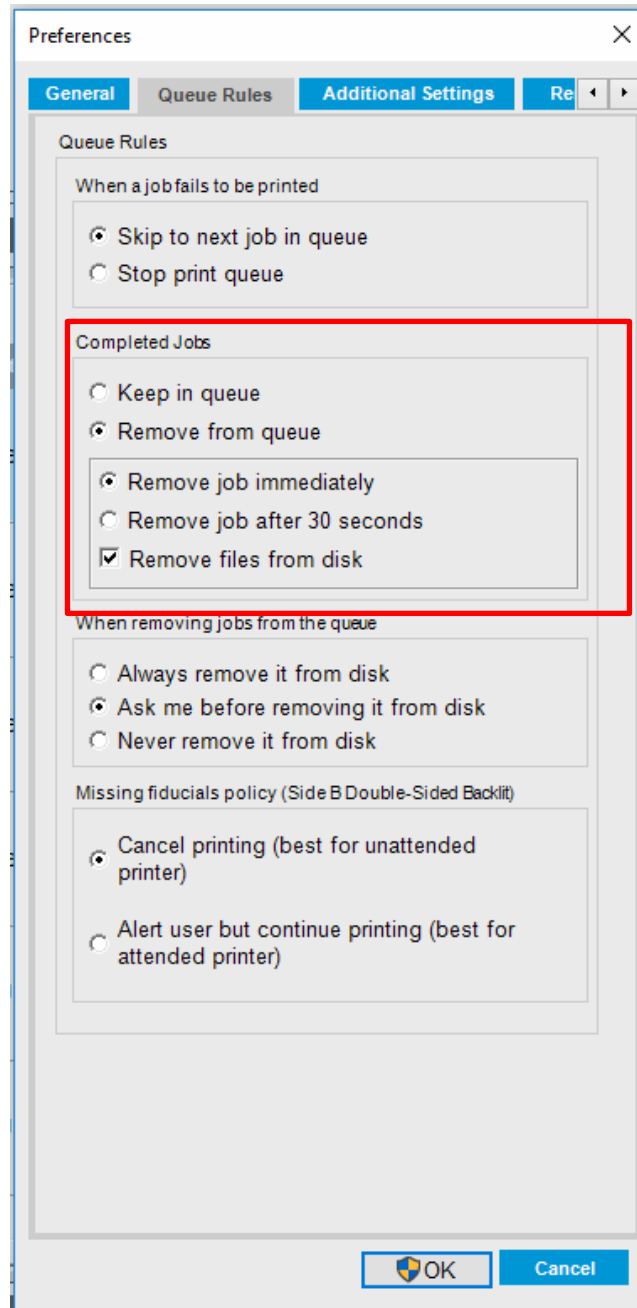
Default value for Remaining Substrate on Load

Remaining substrate: cm

- Job notes alignment could be configured on left or right



- Printed files can now be automatically deleted once completed



Fixes:

- Fixed Day & Night dual side misalignment issue
 - In Previous releases when printing using Day & night accessory there was an horizontal misalignment on Side B vs Side A. The issue with this misalignment has been fixed and implemented in this firmware release.
- Fixed IPS disconnection after FW upgrade issue
- Fixed text issues in printer user interface when using the printer in Japanese or Taiwanese language
- Fixed substrates synchronization issues between printer and Print OS.