



# **Foster**

# DYE SUB ON-A-ROLL® LIFTER

"TOUCHLESS" FABRIC AND TRANSFER PAPER ROLL HANDLING

## YOUR ROLLS ARE DAMAGE FREE!

- Telescoping arm hooks hold the ends of the roll spindles, so there is no direct contact or pressure on freshly printed transfer paper or fabric.
- Safety latches prevent the spindle and media roll from falling off the hooks during transport.

## FINISH YOUR JOBS QUICKLY AND WITHOUT BACK PAIN

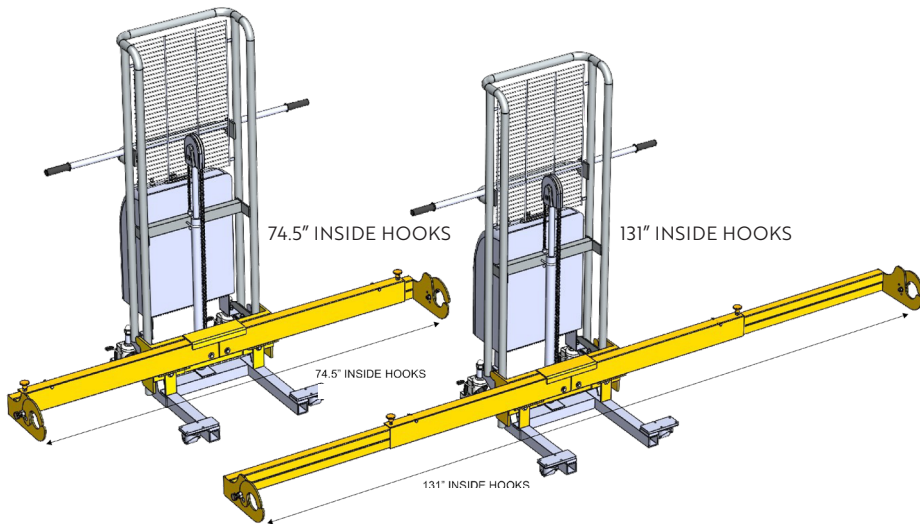
- Foster's dye Sub On-a-Roll Lifter does the job of two people. Users effortlessly lift rolls as heavy as 300 lbs. and as wide as 130."
- Hydraulic Foot pump on the #61535 and powerful DC motor on the #61536 eliminate manual labor of lifting and lowering rolls and reduce roll changeover time.



Model #61536 Uses Standard Outlets for Re-Charging.

## RETRACTABLE TELESCOPING ARMS – ONE FOR EVERY JOB

- Fit multiple sizes and brands of fabric graphic printers.
- Collapse to half their length for compact storage.
- Two bolt sets easily attach to the arm assemblies.



## CHOOSE THE MODEL THAT'S RIGHT FOR YOU!

**Model #61535 Manual Hydraulic Lifting/Manual Movement**

33" Lift Height

**Model #61536 Motorized Lifting/Manual Movement**

54" Lift Height

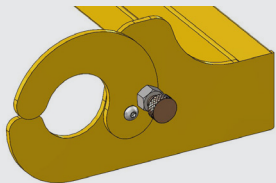




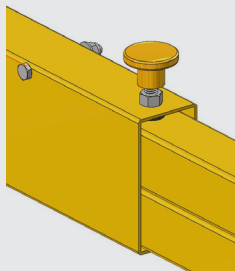
# DYE SUB ON-A-ROLL® LIFTER

DESIGNED TO KEEP YOUR JOBS DAMAGE-FREE!

## CHECK OUT THESE EXCEPTIONAL FEATURES



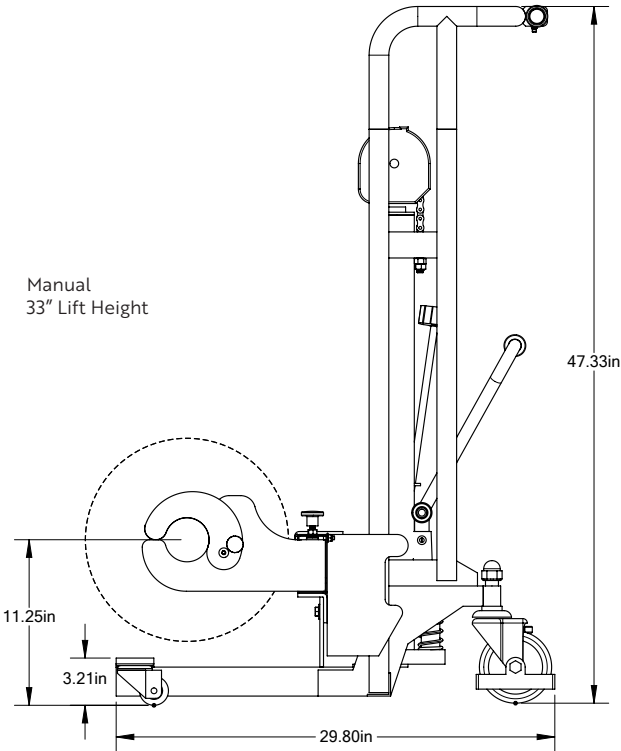
The hook's raised portion prevents it from damaging the printer and is a guide for positioning under the spindle.



Lock knobs secure the distance between the hooks.



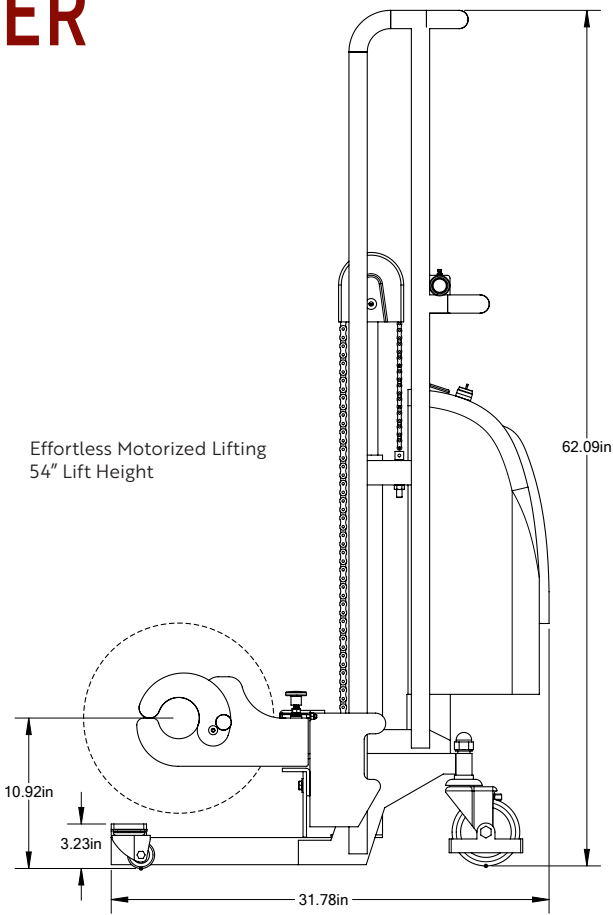
Push Bar is 40" long and ideally placed for extra precision and leverage when positioning the lifter up to the printer.



Manual  
33" Lift Height

### SPECIFICATIONS 61535

Roll Weight Capacity	300 lbs. (136 kg)
Max. Lift Height	33" (84cm)
Max. Roll Width	126" (320 cm)
Max. Roll Diameter	13.8" (35 cm)
Min Spindle Width	74.25" (188.5 cm)
Max. Spindle Width	138.5" (352 cm)
Overall Dimensions	See the drawing
Height of Caster Frame at front casters	3.25" (8.25 cm)
Front Swivel Casters	2" (5cm)
Rear Swivel Casters	5" (12.7cm)
Manual Lifting:	Hydraulic foot pump



Effortless Motorized Lifting  
54" Lift Height

### SPECIFICATIONS 61536

Roll Weight Capacity	300 lbs. (136 kg)
Max. Lift Height	54" (137 cm)
Max. Roll Width	126" (320 cm)
Max. Roll Diameter	13.8" (35 cm)
Min Spindle Width	74.25" (188.5 cm)
Max. Spindle Width	138.5" (352 cm)
Overall Dimensions	See the drawing
Height of Caster Frame at front casters	3.25" (8.25 cm)
Front Swivel Casters	2" (5cm)
Rear Swivel Casters	5" (12.7cm)
Electric	12V/60AH DC motor USA (220V/50HX DC motor Europe)
Battery	Maintenance-free lead acid battery
Charge	Built-in 110V AC Charger USA (Built-in 220 AC charger Europe)

**2-YEAR WARRANTY on hydraulics,  
telescoping arms, and casters**  
**1-YEAR WARRANTY on motor**  
**5-YEAR WARRANTY on frame**

**800.523.4855 or 267.413.6220**  
**P.O. Box 389 Lafayette Hill, PA 19444 USA**  
**customerservice@go-foster.com • www.go-foster.com**