

Single-sided posters with HP PageWideXL Pro

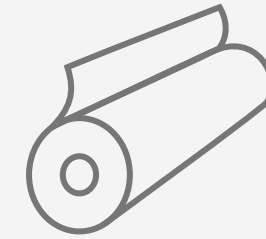
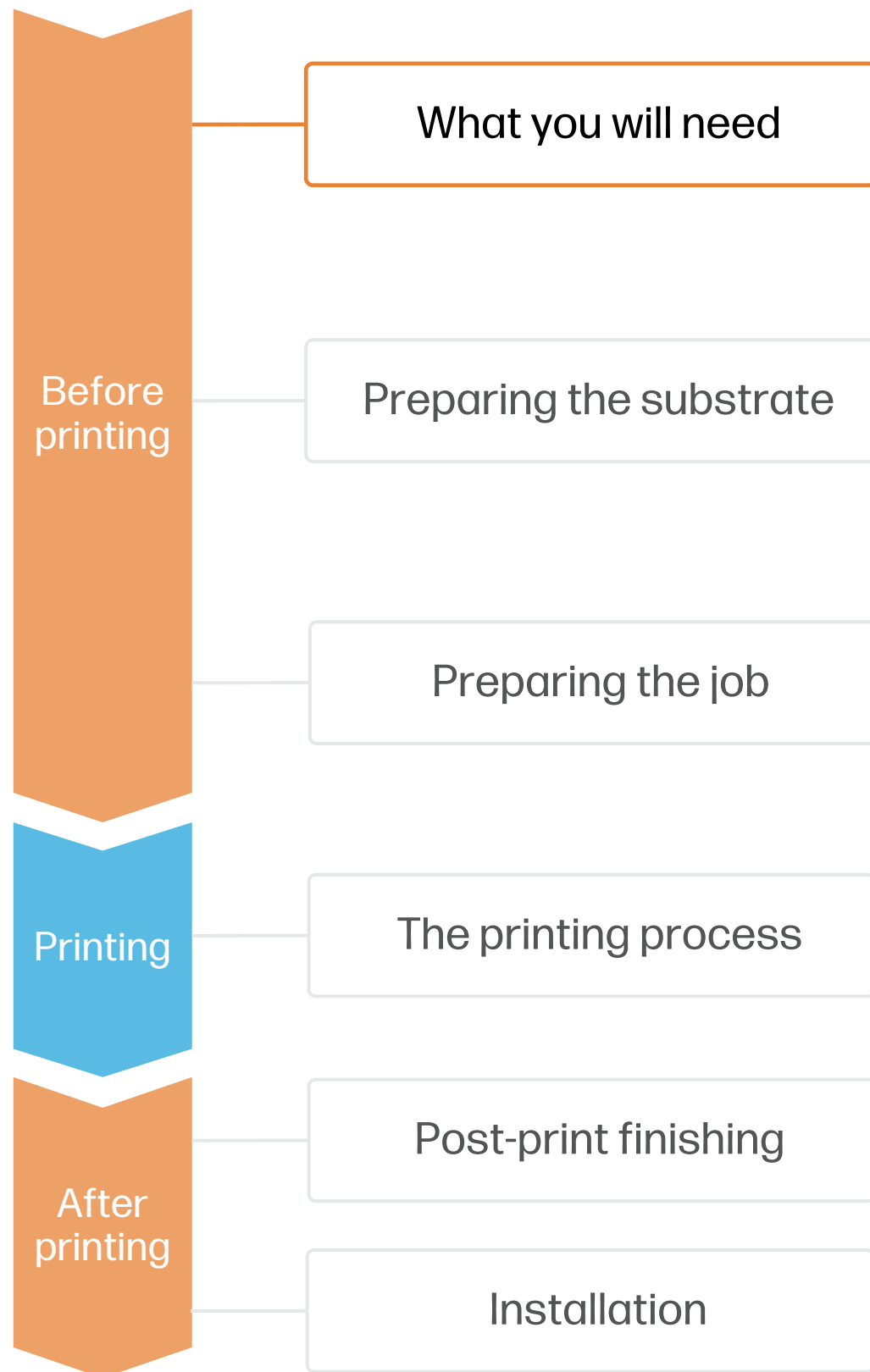
This document will explain how to create and print single sided posters, including post-print finishing.

For a deep-dive training, access the [HP PageWideXL Pro Printer series - Single-sided poster printing course](#) on the [Learn with HP website](#).

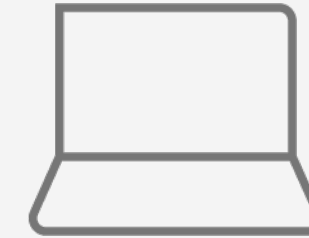


How to create single-sided posters

What you will need



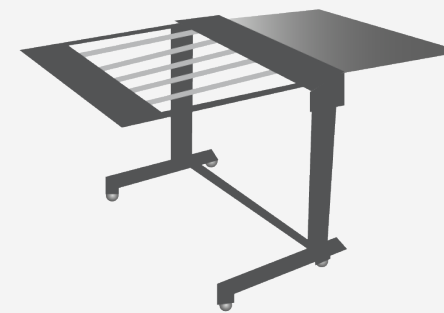
Medium weight paper roll (100-200gsm)



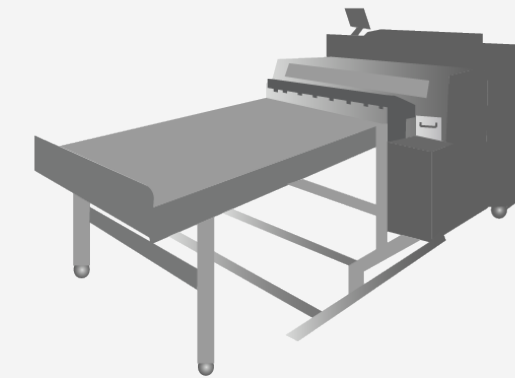
Software tools (RIP, edition, etc.)



PageWide XL Pro printer



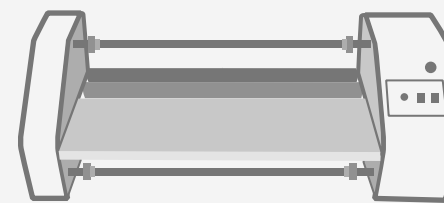
Pro Stacker (optional)



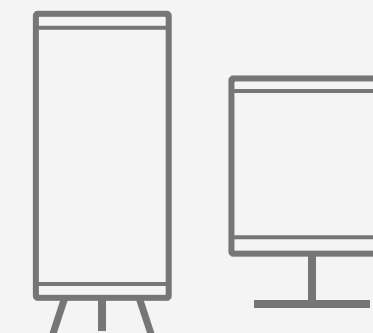
Automatic XY inline cutter (optional)



Film laminate (optional)



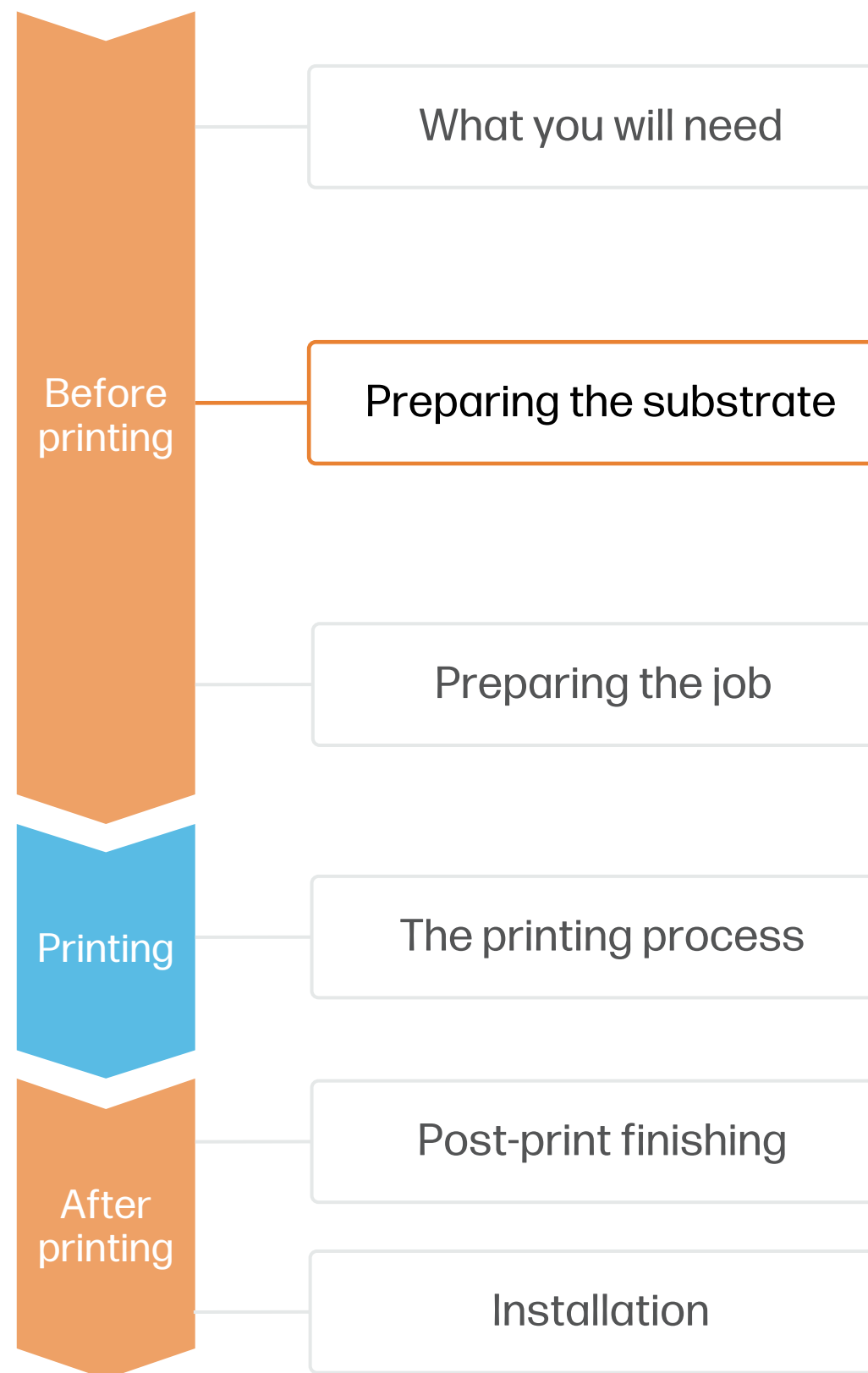
Film laminator (optional)



Display frames

How to create single-sided posters

Preparing the substrate



1. Types of substrates for posters

- Single-sided posters are usually created using **medium weight papers** ranging from 100 - 200gsm.
- Paper substrates are available in many grades, colors, and surface treatments:
 - **Uncoated:** Great for a natural look at an economical price.
 - **Inkjet treated uncoated:** Boosts color gamut while remaining cost-effective.
 - **Inkjet coated:** Greatly enhances gamut, creating vivid saturated colors.
- You can find a list of compatible materials that have been tested by HP in the [HP Media Locator](#)

NOTE: Check the [HP PageWideXL Pro - Substrates training kit](#) for a detailed explanation on how to choose the right media substrate to fit your needs.

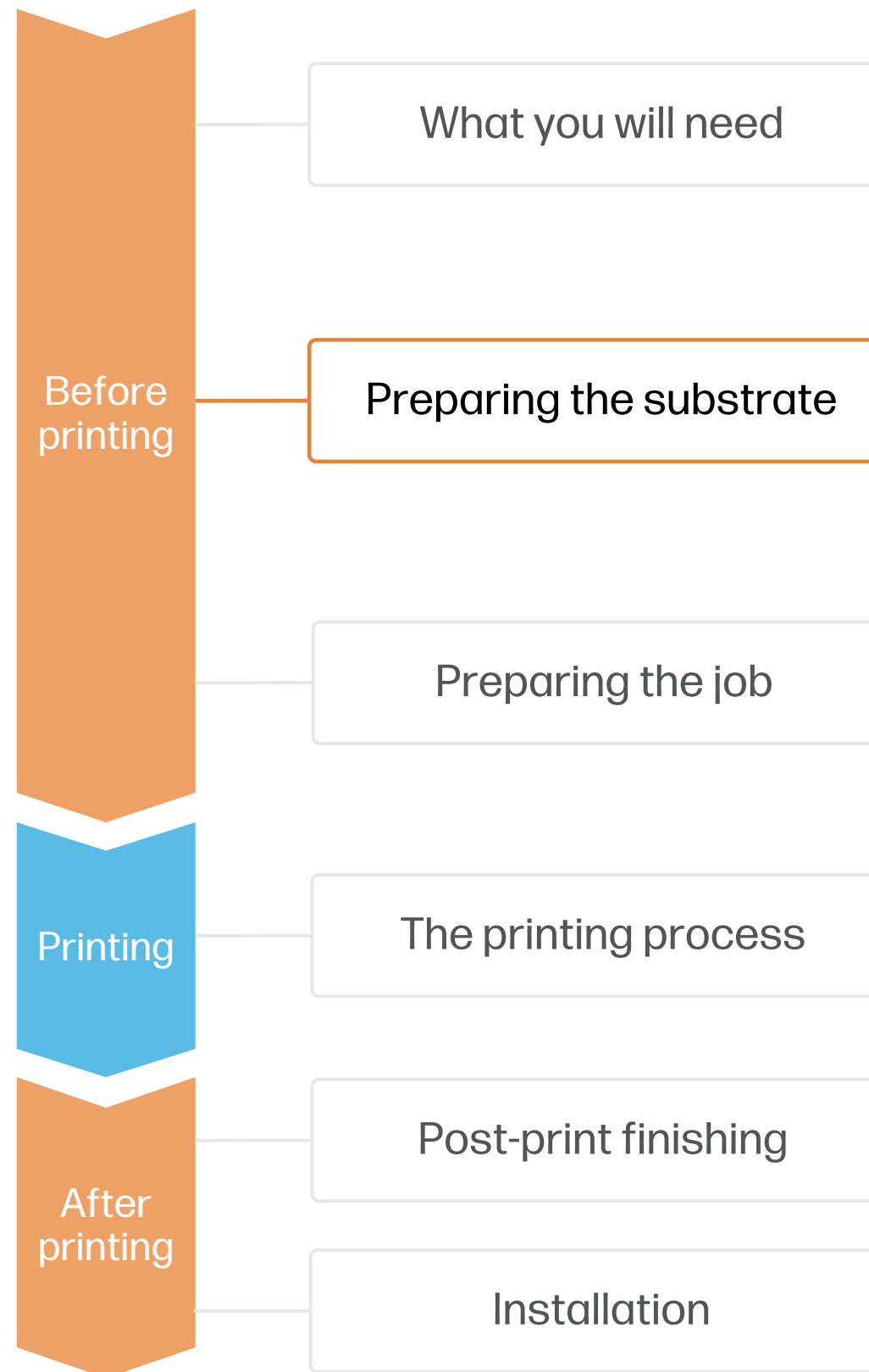
2. Usage

- **Short-term** indoor promotional posters are regularly replaced and do not require extra protection.
- For **long-term** or **outdoor** uses, it's recommended to protect the posters using **film lamination**.

TIP: Enroll on the [HP Learn course on creating Single-sided posters](#) for a step-by-step guide on how to prepare, submit and print single-sided posters.

How to create single-sided posters

Preparing the substrate



3. Storage

Store rolls in the original packaging within the temperature and humidity range specified on the paper label. If the label gives no specification, try to store the rolls at 20°C and a relative humidity of 40–60%.

Allow papers to adapt to room conditions, out of the packaging, for 24 hours before printing.

When using heavyweight stiff papers, use adhesive tape to stick the leading edge of the roll to the core to prevent it from unwinding.

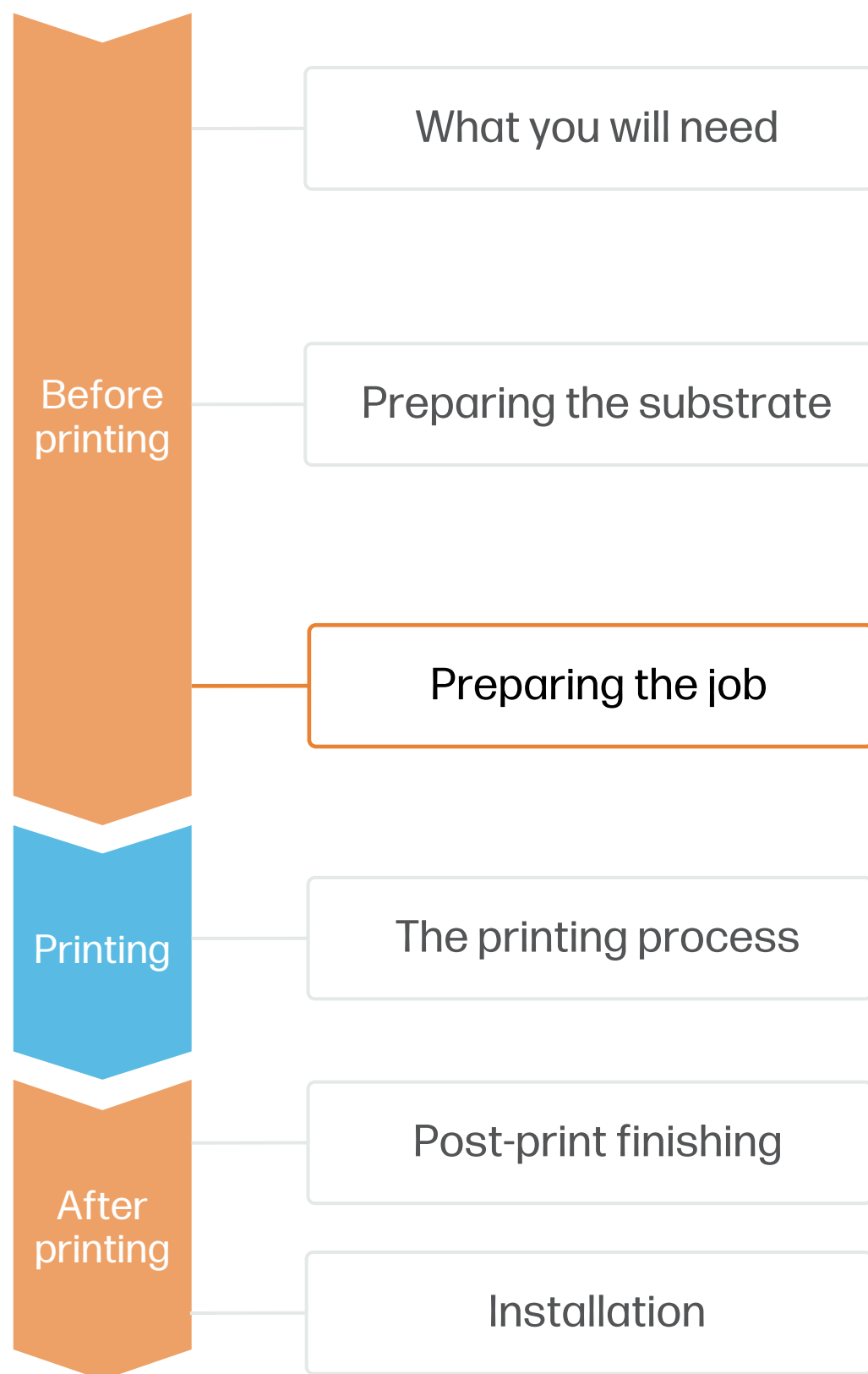
4. Handling

Wear gloves when handling the paper to avoid getting fingerprints and other marks on the surface.

Be careful not to hit the roll's outer edges, since that could damage the paper.

How to create single-sided posters

Preparing the job



5. Substrate presets

- Check if the material you are going to use has its own custom optimized substrate preset:
 - a) On the printer's **front panel** online Paper Library search ([tutorial](#))
 - b) On the **web**, in the [HP PrintOS Media Locator](#):
On the Filter tab, select your Printer Model, then select **"Format: Roll"**.
 - c) On the **web**, from the substrate vendor's or RIP vendor's websites
- Download and install.



Select a suitable substrate preset based on your media

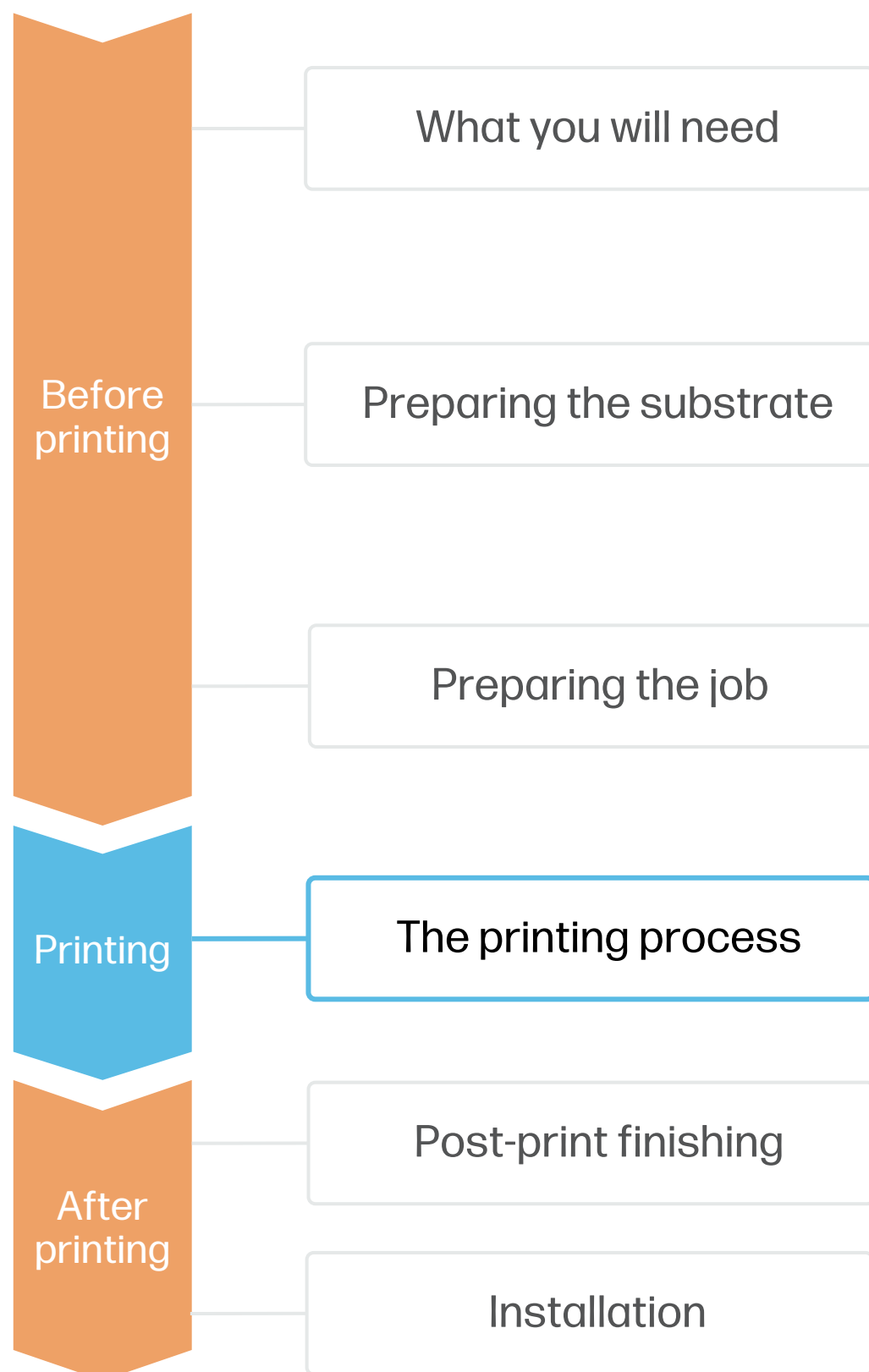
NOTE: If you cannot find custom substrate presets for your material of choice, you can always use the **generic presets** already installed in your printer.

- For uncoated papers, try the **Plain Paper (>110gsm)** preset.
- For inkjet treated or coated papers, try the **Heavyweight coated paper (>100gsm)** preset.

Classification	Media Name	Format	Manufacturer	Type	Sub-type	Applications	Tested Widths
hp	HP Gloss Poster Paper, 3-in Core	Roll	hp	Paper	Coated for waterbased inks	Geographic Information Sy...	1016mm
hp	HP Production Matte Polypropyl...	Roll	hp	Polypropylene	Synthetic Paper	Banners , POP and retail ...	914mm, 1016mm
hp	HP Universal Heavyweight Coat...	Roll	hp	Paper	Coated for waterbased inks	Architecture (AEC) and en...	914mm, 1016mm
hp	HP 4-mil Double Matte Film, 3-i...	Roll	hp	PET Film	Other PET films	Architecture (AEC) and en...	22", 24", 30", 34", 36", 40"
hp	HP Double Matte Film, 3-in Core	Roll	hp	PET Film	Other PET films	Architecture (AEC) and en...	914 mm x 45,7 m
hp	HP Durable Foldable Document ...	Roll	hp	PVC Free Banners	Woven PE (LDPE, HDPE)	Banners , POP and retail ...	24", 36", 40",
hp	HP Satin Wrapping Paper, 3-in ...	Roll	hp	Paper	Coated for waterbased inks	POP and retail displays ...	610mm, 762mm, 914mm

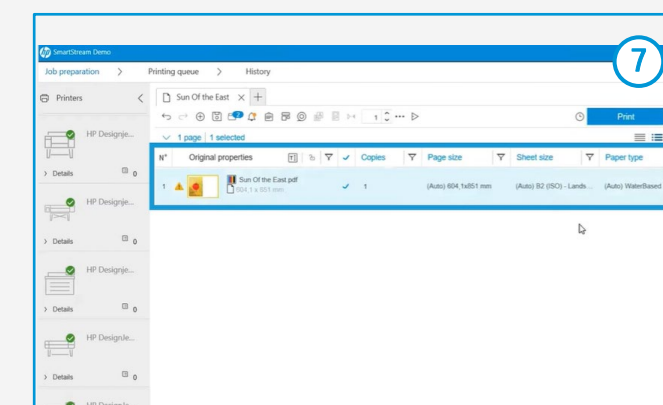
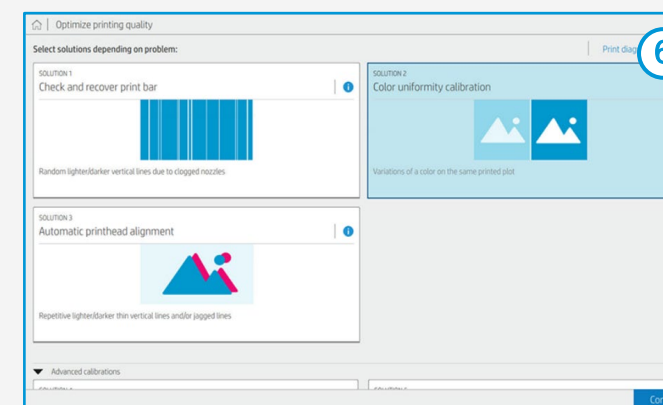
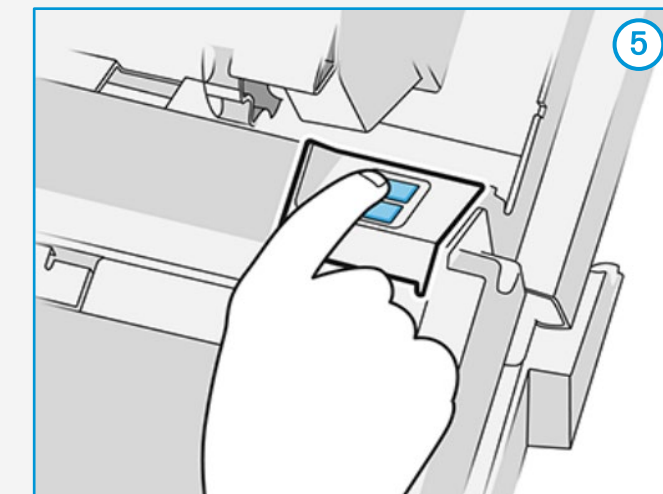
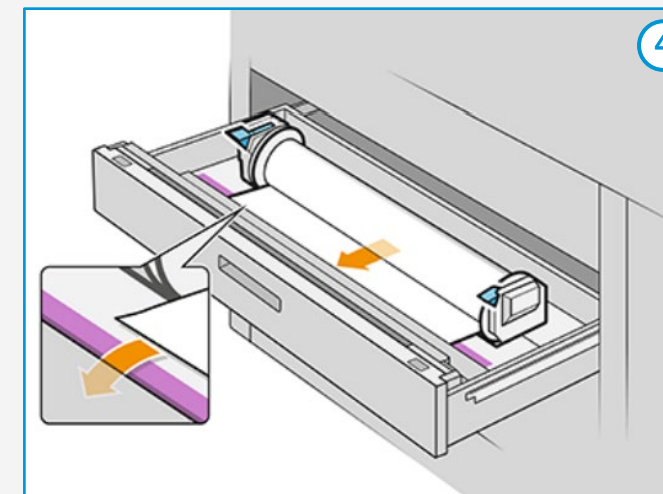
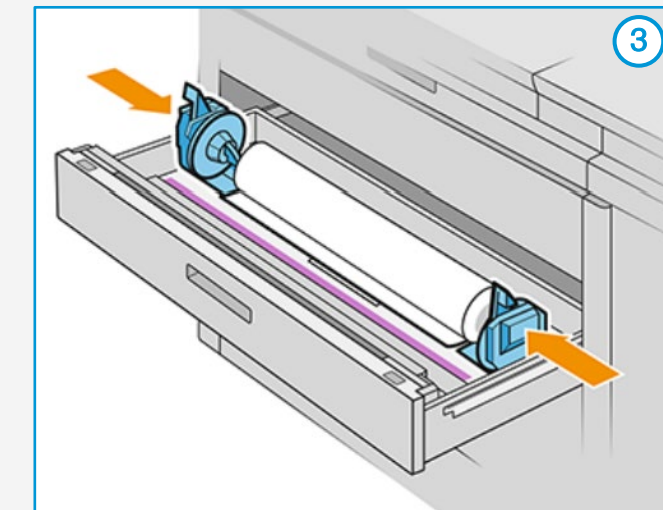
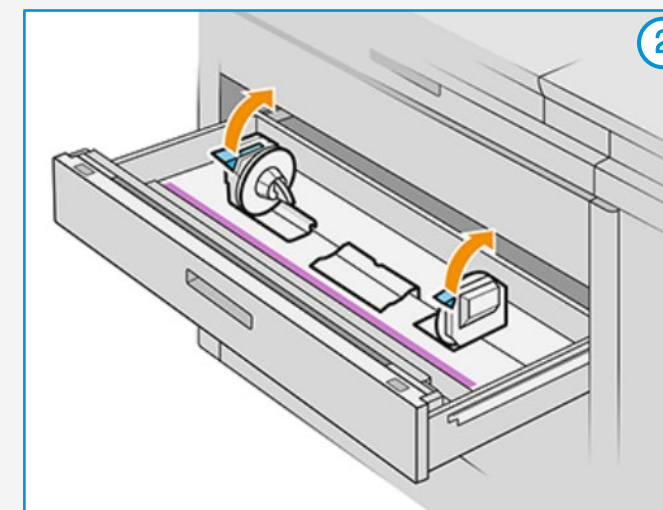
How to create single-sided posters

The printing process



Loading a roll

1. Use the front panel to go to the **Paper menu**, then press **“Load”** on the roll you want to load.
2. Open the paper drawer, unlock the levers on both hubs, and move the hubs to make room for the roll.
3. Place the roll between the hubs and slide the hubs towards the center. Ensure that the hubs are fitted tightly to the roll on both sides.
4. Lock the levers on both hubs, and feed the paper through the slot under the roll until you hear a beep.
5. If the edge of the roll is not cleanly cut, press the feed & cut button corresponding to your roll. Close the drawer and press **“Finish & Check”**.
6. If it’s your first time using this substrate, perform a basic **Color Uniformity Calibration** and **Automatic Printhead Alignment** before printing. You can follow this [Calibration guide](#).
7. Load your printing file into **HP SmartStream** or other third-party compatible RIPs, like Onyx or Caldera.
8. Choose the parameters such as paper type, size, print quality, or crop settings, and click **“Print”**.

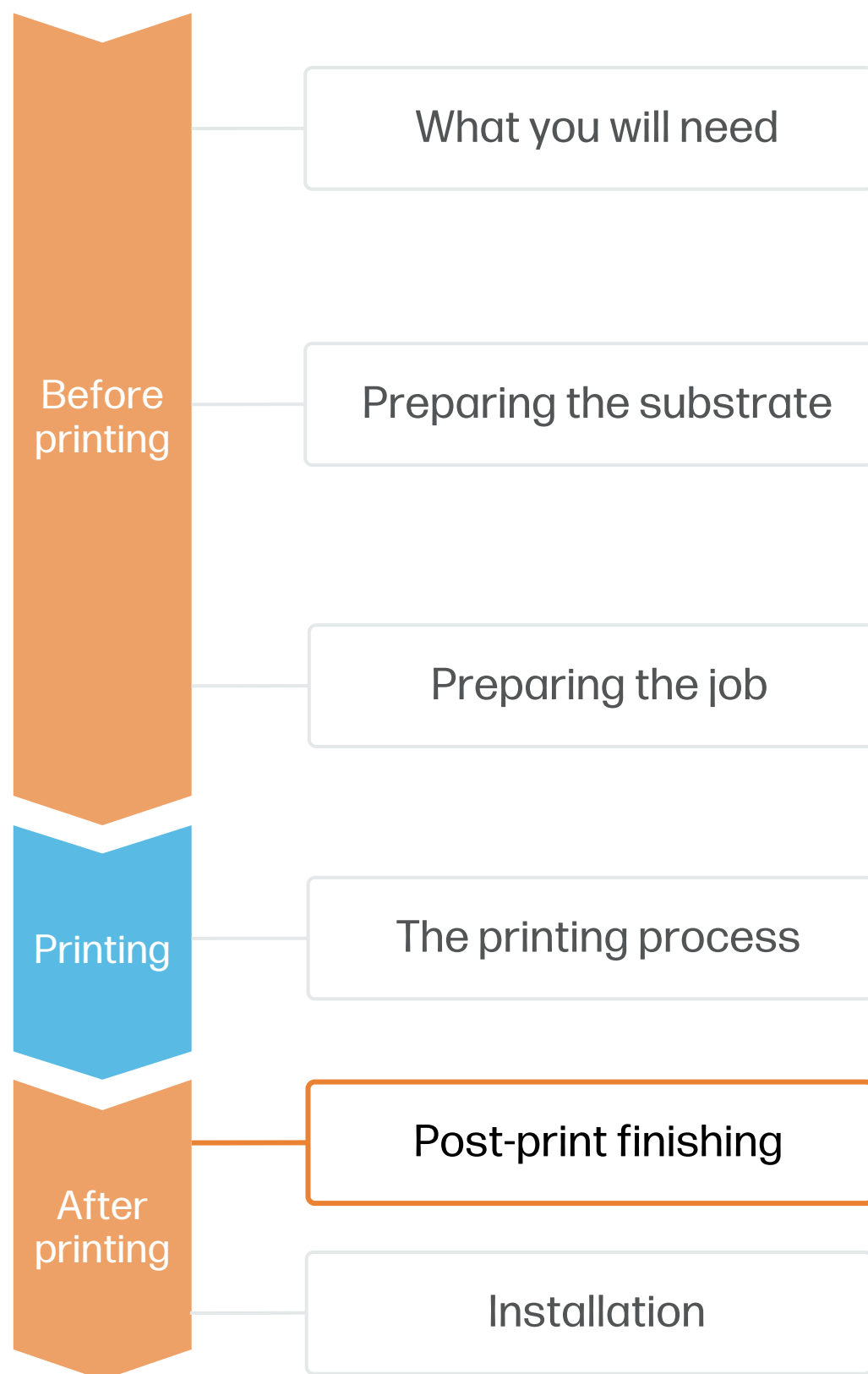


TIP: Check this [short video guide](#) if you need help with the loading process.

NOTE: Learn how to boost your workflow efficiency using HP SmartStream by enrolling on the available training: [“Advanced certification - PWXLPRO5200and8200”](#) on HP Learn.

How to create single-sided posters

Post-print finishing

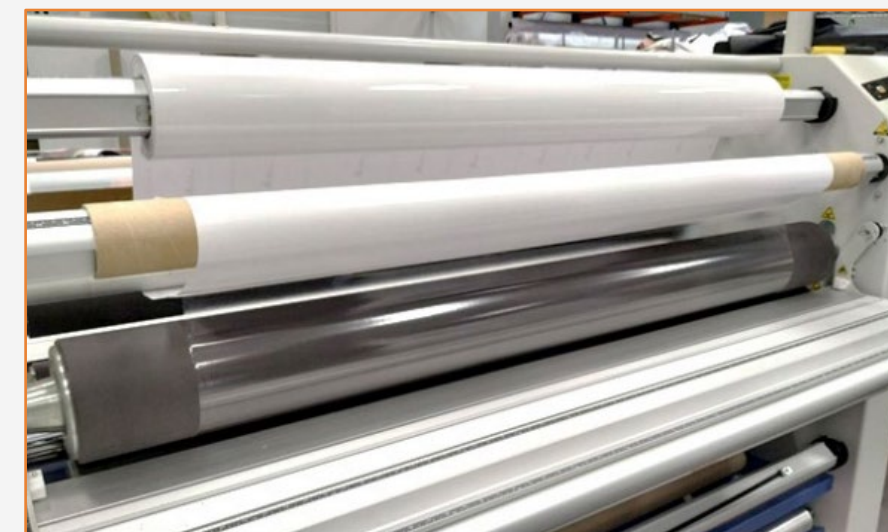


1. Lamination (optional)

Laminating the printed posters will make them extremely durable, ideal for long-term applications.

We recommend using a gloss transparent film for lamination. You can use either hot or cold laminating processes, depending on your needs and available equipment.

If unsure about which lamination settings to use, contact your laminate manufacturer.



2. Full bleed cutting (optional)

Use an **XY inline trimmer machine** such as the Fotoba FHS42-PW to automatically print and cut **borderless posters** to size, achieving striking full bleed visuals.

Alternatively, use a **wide format manual rotatory trimmer** or **guillotine trimmer** to cut the posters to full bleed.



XY inline trimmer (Fotoba FHS42-PW)

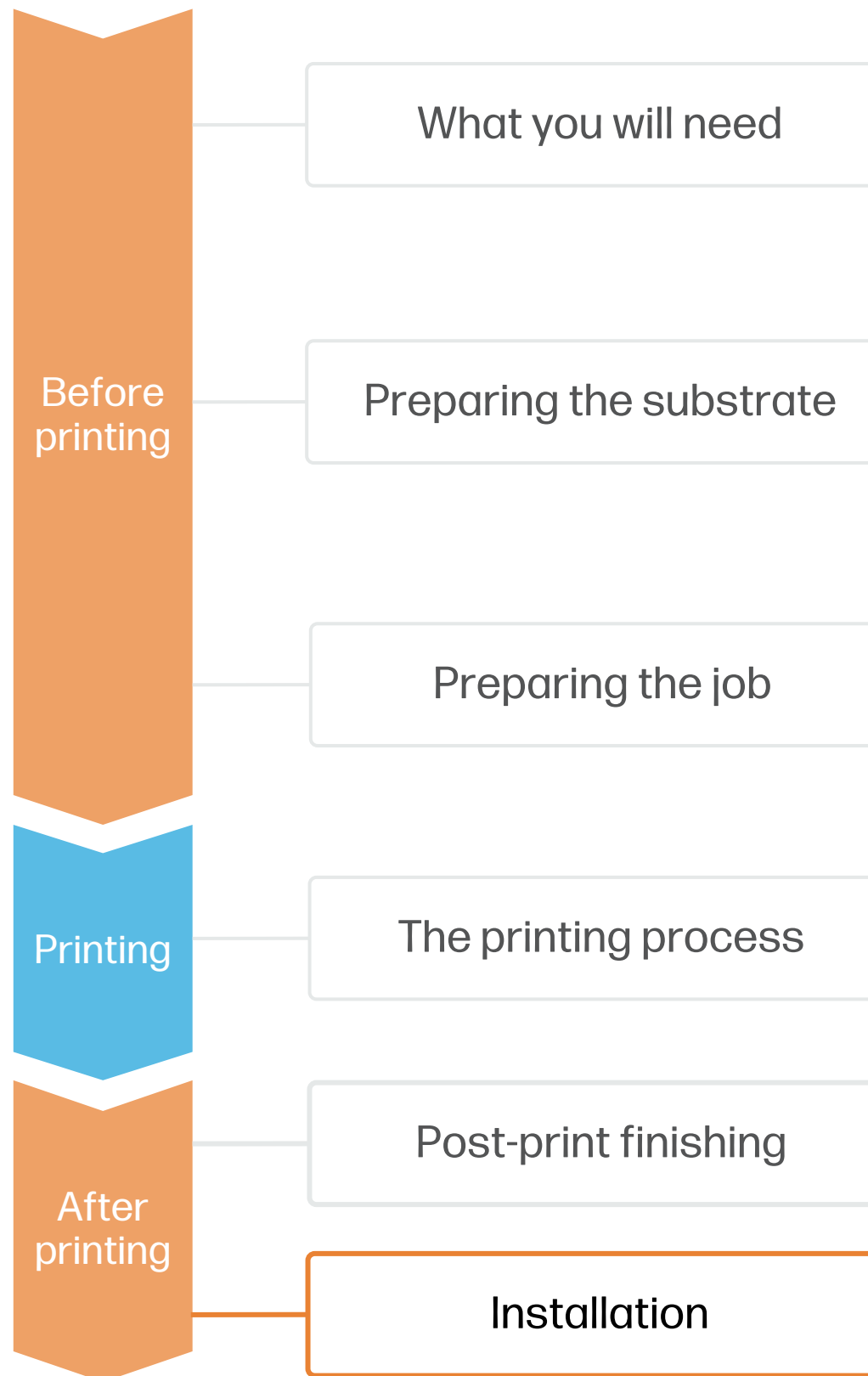


Wide format manual trimmer



How to create single-sided posters

Post-print finishing



3. Installation

Use a display stand or a poster frame to both protect and showcase your posters



