

Firmware md9986_hp_plus_020-2 is available

For the HP Latex Plus Cutting Solutions

October 2024

The latest build for HP Latex Plus Cutting Solutions is now available to be downloaded and installed. This new software includes new features and fixes detailed below.

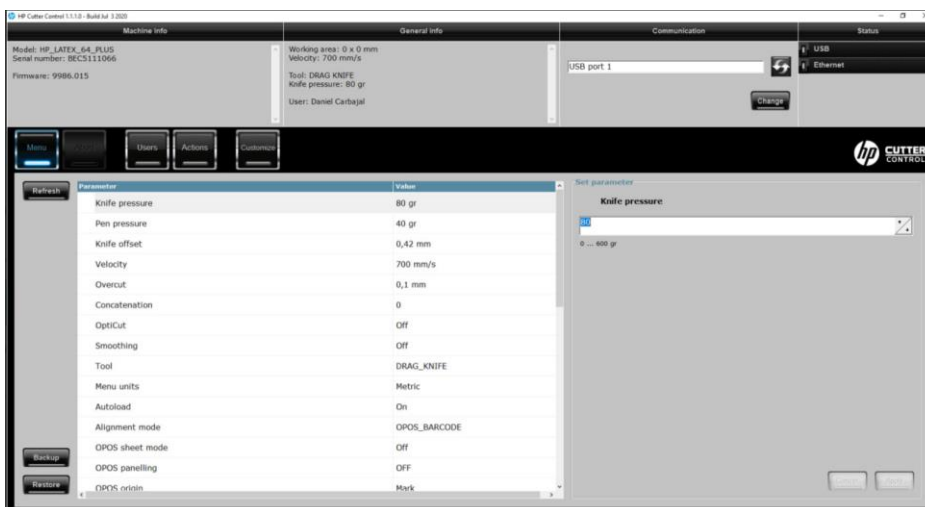
Related links:
www.hp.com/go/latex/

Printers related to this article
[HP Latex Plus Cutting Solutions](#)

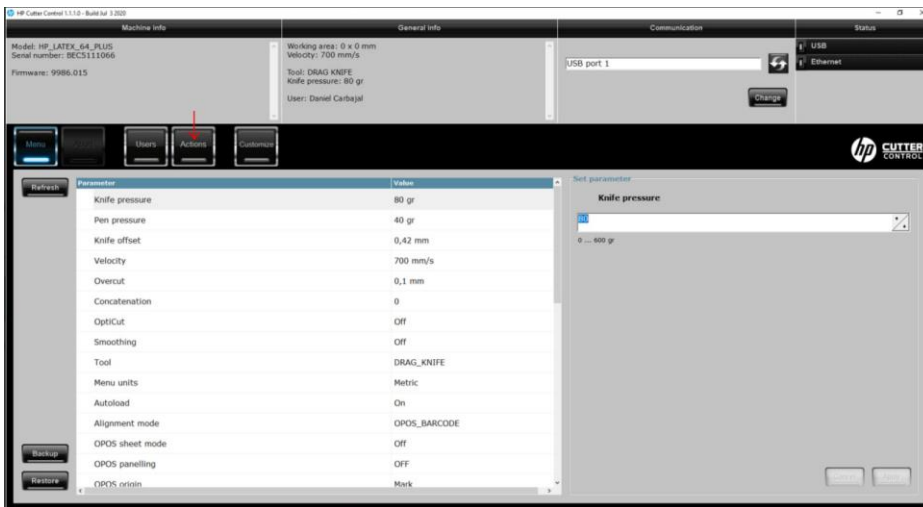
Installing the new Firmware on HP Latex Plus Cutting Solutions:

Installation of a new Firmware version goes through HP Cutter Control.

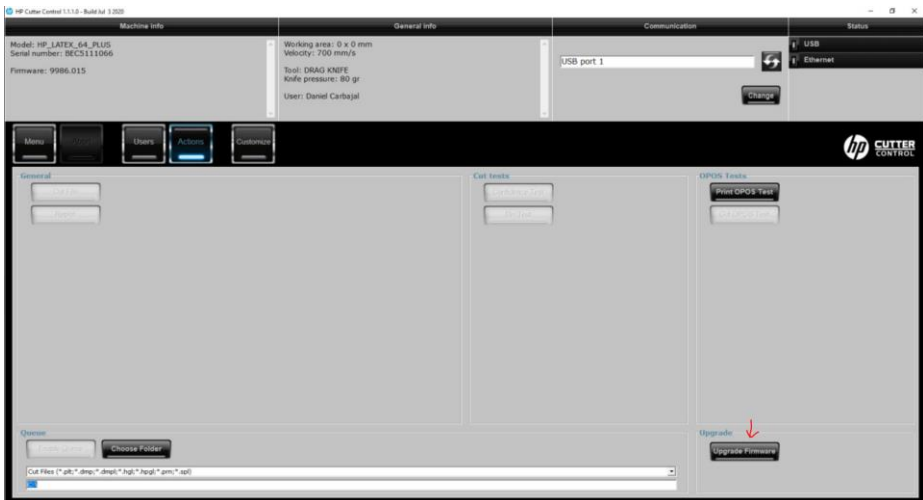
1. Download the newest Firmware version, md9986_hp_plus_020-2:
<http://www.hp.com/go/latex115plusprintandcutter/support>
<http://www.hp.com/go/latex315plusprintandcutter/support>
<http://www.hp.com/go/latex335plusprintandcutter/support>
<http://www.hp.com/go/latex630plusprintandcutter/support>
2. Download the newest version of HP Cutter Control and the USB driver from the same links.
3. Run HP Cutter Control



4. Press above "Actions"



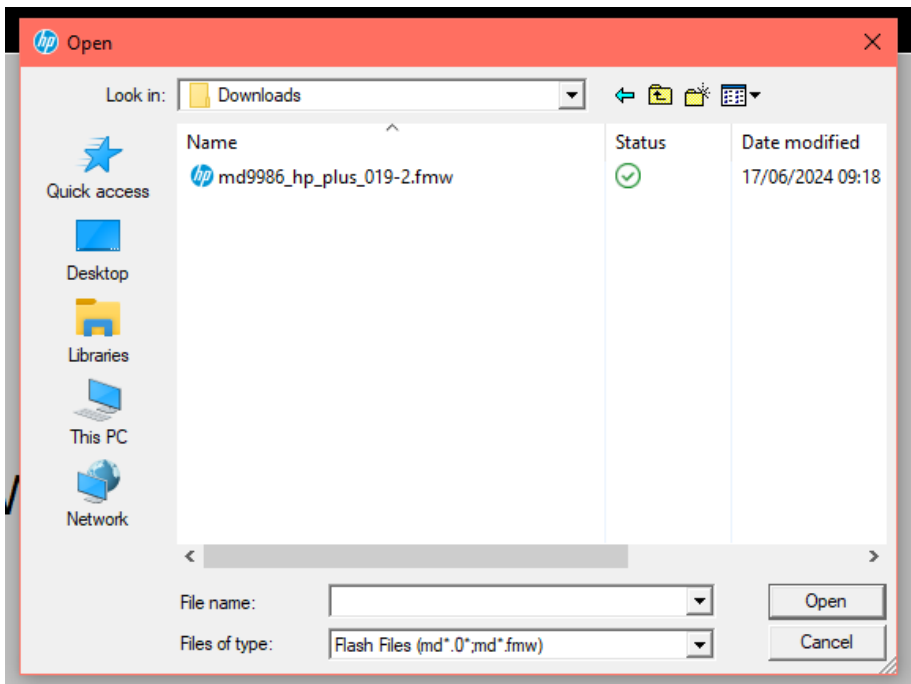
5. On the bottom right part of the window, press above "Upgrade Firmware"



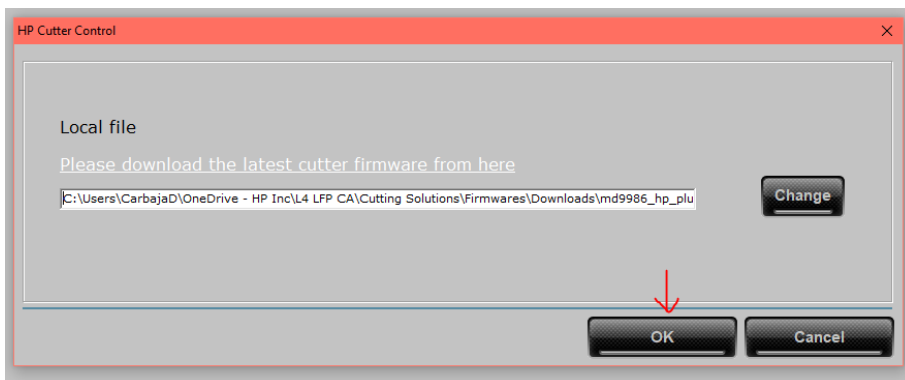
6. Once the window is open, press above "Change"



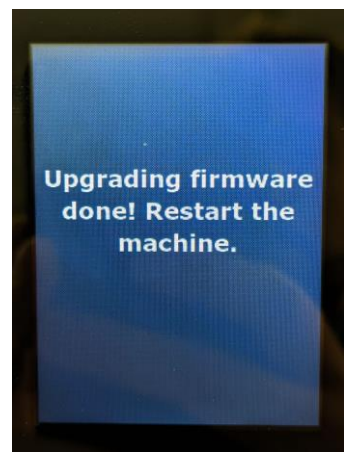
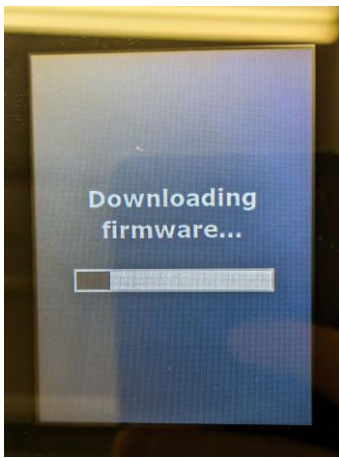
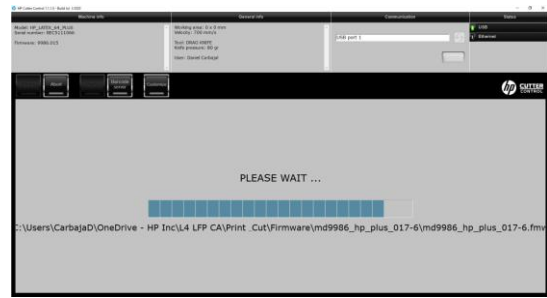
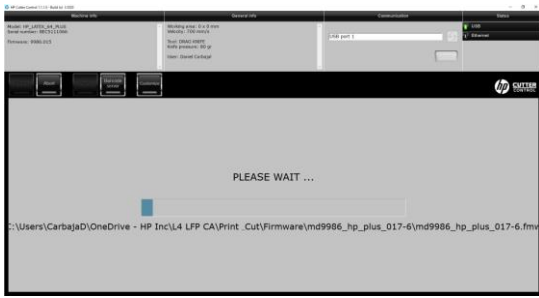
7. Select the recently downloaded Firmware file .fmw and press “Open”



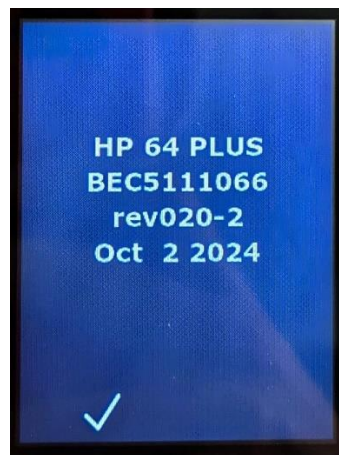
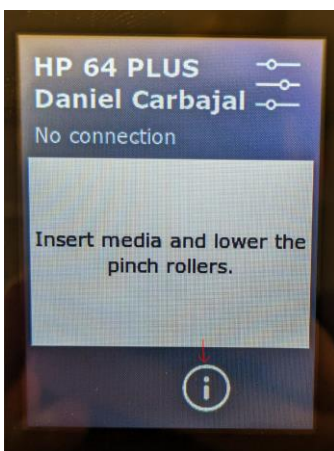
8. Press “OK”



9. Following sequence will appear on both HP Cutter Control and Cutter Front Panel, let the process come to an end:



10. After installed, reboot the printer and check if the new firmware version runs on it by pressing about the info button



Firmware enhancements

- Improvement: Toggle media sensor LED to filter out sunlight
Sensor baseline readings are done by comparing its value with the media LED both on and off. The difference between these two readings serves as the threshold for determining whether the sensor is covered or uncovered. This method was redefined to mitigate false detections caused by ambient sunlight. Even when the media LED is off, sunlight can still influence the sensor's value, leading to erroneous coverage indications.
- Improvement: Increase ethernet priority over barcode reading priority
This improvement ensures a prompt response to pings, even during barcode scanning. Barcode reading can be time-consuming, and if response is not swift to pings, software applications like SAI may terminate the connection with the device.