

Printer power off scheduler

This new feature is designed to optimize electrical consumption in printers by allowing users to schedule automatic shutdowns directly from the IPS, enhancing efficiency.

The Power Off scheduler can be set up in just two easy steps

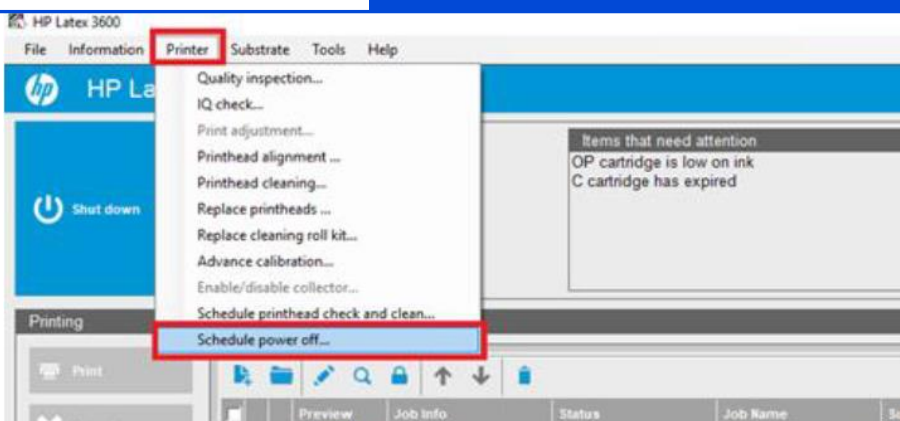
HP Latex 3x00 series and HP Latex 1500

Save at least 19% energy^[1] with the printer power off scheduler

March 2025

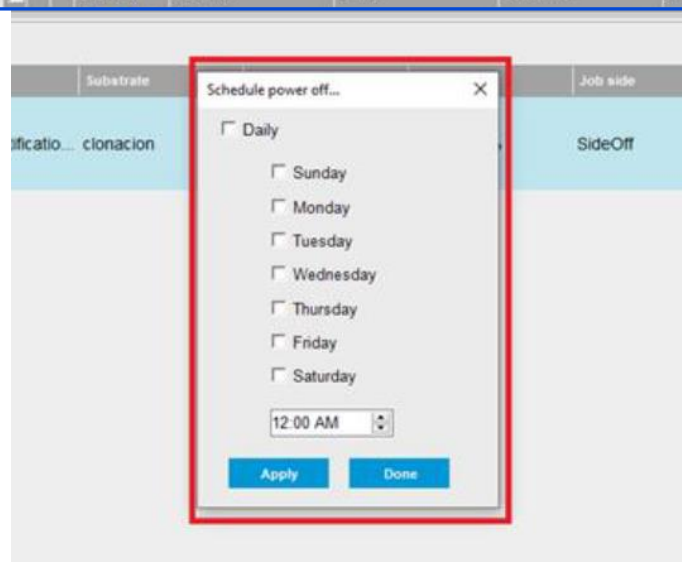
1

From the IPS
Go to Printer → Schedule Power Off



2

Select the days and times for when the printer will automatically power off, then press APPLY and DONE



NOTE: Once scheduled, the printer will only shut down if it is in an idle state; otherwise, the shutdown will be skipped.



^[1] The percentage reductions in energy consumption are based on tests conducted by HP in 2023. The data reflects the implementation of the power-off scheduler across various printer models, measured monthly. Actual savings may vary depending on specific usage patterns, printer models, and environmental conditions